

BOBCAT COMPANY PRICE PAGES

NA Excavators



Please note the following when using Bobcat Price Pages:

- All prices are shown in U.S. dollars.
- Check BobcatNET Pricing Homepage for current Canadian exchange rate.
- For current Dealer Installed Accessories pricing, reference BobQuote or Dealer Parts Department.
- Prices and specifications are subject to change without notice.

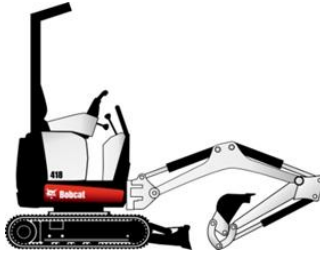
THE FOLLOWING UPDATES HAVE BEEN MADE TO THIS DOCUMENT:

Date	Description of Change
7/1/2023	Effective Saturday, July 1, 2023 Bobcat Company has adjusted the SLP of power units and options. New option packages have been rolled out.
1/1/2024	No adjustments.
7/1/2024	Effective Monday, July 1, 2024 Bobcat Company has adjusted the SLP of power units and options.
1/1/2025	Effective Wednesday, January 1, 2025 Bobcat Company has adjusted the SLP of power units and options.
4/14/2025	Effective Monday, April 14, 2025 Bobcat Company has released new factory installed options for Hydraulic Pin Grabber, Depth Check, and Rearview Camera on select models.
6/4/2025	Effective Monday, June 9, 2025 Bobcat Company has released new factory installed options for Hydraulic Pin Grabber Coupler and Clamp for the E26
9/15/2025	Launch of E17 / E20 R2 Excavators
1/1/2026	Effective Thursday, January 1, 2026 Bobcat Company has adjusted the SLP of power units and options.

- *Certain Specification(s) are based on engineering calculations and are not actual measurements.
- *Specification(s) are provided for comparison purposes only and are subject to change without notice.
- *Specifications(s) for your individual Bobcat equipment will vary based on normal variations in desing, manufacturing, operating conditions, and other factors.

E10

Bobcat Compact Excavator



Standard Equipment

Adjustable Hydraulic Joystick Controls	Dozer Blade with Extensions
Auxiliary Hydraulics –	Horn
- W/Boom Mounted Flush Face Quick Couplers	Hydraulically Retractable Undercarriage
Operator Guard – Fold Down	Keyed Ignition
- Includes: Retractable Seat Belt, Power Port	Long Arm
- Tip Over Protective Structure (TOPS)	Rubber Tracks
Meets Requirements of ISO 12117-2: 2000	Spark Arrestor Muffler
Control Console Locks	Tier 4 Diesel Engine
Control Pattern Selector Valve (ISO/STD)	Two-Speed Travel
Zero Tail Swing	Work Light

Quick Specs

	<u>E10</u>
Engine Model (Tier 4).....	D722
Horsepower.....	10.2
Travel Speed (Maximum).....	1.7 MPH
Operating Weight*.....	2,593 lbs.
Operator Guard Height.....	87"
Width.....	28"- 43.3"
Length, Transport.....	110"
Dig Depth.....	6'
Reach at Ground Level.....	10' 2"
Dump Height.....	6'
Arm Length.....	31.2"
Boom Swing (Left).....	70°
Boom Swing (Right).....	70°
Bucket Breakout Force.....	1865 lbf.
Arm Breakout Force.....	1248 lbf.
Tail Swing Overhang (UC Expanded).....	0.0"

*Operating Weight includes canopy, rubber tracks, applicable counterweight, standard bucket, fluids full and 165 lb. (75KG) operator.

E10

Bobcat Compact Excavator

Part Number	Description	Compact Excavator	SLP in US \$
-------------	-------------	-------------------	--------------

M5545	E10 Compact Excavator.....		\$31,950
-------	----------------------------	--	----------

Part Number	Description	Dealer Installed Accessories - Order From Parts
-------------	-------------	---

To ensure having the correct Part Number for a Dealer Installed Accessory, obtain the excavator model and serial number and check with the Dealer Parts Department. For the most current Dealer Installed Accessories pricing, refer to BobQuote or Dealer Parts Department.

7160236	3" Seat Belt Kit.....	\$ _____
7433393	Beacon Kit.....	\$ _____
	Estimated Installation Time: 1 hr.	
7371916	Boom Light LED Kit.....	\$ _____
	Estimated Installation Time: 2 hrs.	
6904762	Excavator Operator Safety DVD.....	\$ _____
	Includes both English and Spanish versions on one DVD.	
6903186	Excavator Operator Training Kit.....	\$ _____
6900916	Excavator Service Safety Training Kit.....	\$ _____
7198924	Keyless Start Kit.....	\$ _____
	Provides provision for one Owner Code.	
7334261	Translator Literature Kit.....	\$ _____
7160235	Travel Motion Alarm Kit.....	\$ _____
	Estimated Installation Time: 2 hrs.	

E17

Bobcat Compact Excavator



Standard Equipment

Auxiliary Hydraulics	Fingertip Boom Swing & Aux Control
- W/ Boom Mounted Flush Face Quick Couplers	Horn
Boom Swing	Hydraulically Retractable Undercarriage
Canopy Includes: Cup Holder, Retractable Seat Belt	Integrated machine lift points
- Roll Over Protective Structure (ROPS) –	Keyed Ignition
- Meets Requirements of ISO 12117-2: 2008	Rubber Tracks
Tip Over Protective Structure (TOPS) –	Short Arm
- Meets Requirements of ISO 12117: 2000	Spark Arrestor Muffler
Falling Object Guard Structure (FOGS) –	Standard Instrument Panel
- Meets Requirements of ISO 10262	Tier 4 Diesel Engine
Control Console Locks	Two-Speed Travel
Control Pattern Selector Valve (ISO/STD)	Vandalism Protection
Dozer Blade with Blade Extensions	Warranty - 2 years or 2000 hours
Engine/Hydraulic Monitor w/ Shutdown	- (whichever occurs first)
Enhanced Hydraulic Joystick Controls	LED Work Light
- W/ Premium Joysticks	Zero Tail Swing

Quick Specs

	E17 R2
Engine Model (Tier 4).....	3TNV74F
Horsepower.....	15
Auxiliary Hydraulics Flow.....	7.9 GPM
Travel Speed (Maximum).....	2.5 MPH
Operating Weight*.....	3774 lbs.
Shipping Weight.....	3516 lbs.
Operator Guard Height.....	91.4"
Width.....	38.6" - 53.5"
Length, Transport.....	137"
Dig Depth.....	7' 4"
Reach at Ground Level.....	12' 11"
Dump Height.....	8' 2"
Arm Length.....	43"
Boom Swing (Left).....	80°
Boom Swing (Right).....	60°
Bucket Breakout Force.....	3271 lbf.
Arm Breakout Force.....	2680 lbf.
Tail Swing Overhang (UC Expanded).....	0.5"

*Operating Weight includes canopy, long arm, long blade, rubber tracks, applicable counterweight, basic seat, standard bucket, fluids full and 165 lb. (75KG) operator.

E17

Bobcat Compact Excavator

Part Number	Description	Compact Excavator	SLP in US \$
-------------	-------------	-------------------	--------------

M5593	E17 Compact Excavator		\$38,820
	Base machine which includes Enhanced Hydraulic Joystick Controls and Low Effort Joysticks as Std. Equipment		

Part Number	Description	Factory Installed Options	SLP in US \$
-------------	-------------	---------------------------	--------------

ORDERING PATH:

1) REQUIRED: SELECT ONE BOBCAT PACKAGE

2) OPTIONAL: SELECT INDIVIDUAL OPTIONS (NO PREMIUM ADDED)

M5593-P02-C01	Bobcat Canopy Base Package.....	N/C	
	Base canopy machine with standard equipment.		
M5593-P02-C02	Bobcat Canopy with Motion Alarm.....	\$298	
	Base canopy machine that includes travel motion alarm from the factory.		

Part Number	Description	OPTIONAL Selection - Factory Installed	SLP in US \$
-------------	-------------	--	--------------

Attachment Coupler & Clamp

M5593-A10-C83	Mechanical Pin-Grabber and Hydraulic Clamp.....	\$3,259	
	Includes Clamp, Mechanical Pin-Grabber, and one [1] set of non-hardened pins to be used on the attachment. Additional pin kits available through aftermarket parts.		
M5593-A10-C77	French Translation Kit.....	\$181	
	Includes French Translation Manuals		

Part Number	Description	Dealer Installed Accessories - Order From Parts
-------------	-------------	---

To ensure having the correct Part Number for a Dealer Installed Accessory, obtain the excavator model and serial number and check with the Dealer Parts Department. For the most current Dealer Installed Accessories pricing, refer to BobQuote or Dealer Parts Department.

7538046	Engine Block Heater Kit.....	\$ _____
	Estimated Install Time: 2 hrs	
6904762	Excavator Operator Safety DVD.....	\$ _____
	Includes both English and Spanish versions on one DVD.	
6903186	Excavator Operator Training Kit.....	\$ _____
6900916	Excavator Service Safety Training Kit.....	\$ _____
7261978	Keyless Start Kit.....	\$ _____
	Provides provision for one Owner Code. Please refer to Bobcat Parts (BASS) for piece part information. Estimated Installation Time: 1 hr.	
7255948	Mirror Kit.....	\$ _____
	Estimated Installation Time: 0.5 hr.	
7413271	Telematics Kit 1-2t MX.....	\$ _____
	Telematics Kit for E17, E20 excavators.	

E20

Bobcat Compact Excavator



Standard Equipment

Auxiliary Hydraulics	Fingertip Boom Swing & Aux Control
- W/ Boom Mounted Flush Face Quick Couplers	Horn
Boom Swing	Hydraulically Retractable Undercarriage
Canopy Includes: Cup Holder, Retractable Seat Belt	Integrated machine lift points
- Roll Over Protective Structure (ROPS) –	Keyed Ignition
- Meets Requirements of ISO 12117-2: 2008	Long Arm
Tip Over Protective Structure (TOPS) –	Rubber Tracks
- Meets Requirements of ISO 12117: 2000	Spark Arrestor Muffler
Falling Object Guard Structure (FOGS) –	Standard Instrument Panel
- Meets Requirements of ISO 10262	Tier 4 Diesel Engine
Control Console Locks	Two-Speed Travel
Control Pattern Selector Valve (ISO/STD)	Vandalism Protection
Dozer Blade with Extensions	Warranty - 2 years or 2000 hours
Engine/Hydraulic Monitor w/ Shutdown	- (whichever occurs first)
Enhanced Hydraulic Joystick Controls	LED Work Light with After Shutdown Light
- W/ Premium Joysticks	Zero Tail Swing

Quick Specs

	<u>E20 R2</u>
Engine Model (Tier 4).....	3TNV74F
Horsepower.....	15
Auxiliary Hydraulics Flow.....	7.9 GPM
Travel Speed (Maximum).....	2.5 MPH
Operating Weight*.....	4167 lbs.
Shipping Weight.....	3911 lbs.
Operator Guard Height.....	91.4"
Width.....	38.6" - 53.5"
Length, Transport.....	145."
Dig Depth.....	8' 5"
Reach at Ground Level.....	14' 1"
Dump Height.....	9' 2"
Arm Length.....	50.0"
Boom Swing (Left).....	80°
Boom Swing (Right).....	60°
Bucket Breakout Force.....	4121 lbf.
Arm Breakout Force.....	2588 lbf.
Tail Swing Overhang (UC Expanded).....	0.4"

*Operating Weight includes canopy, long arm, long blade, rubber tracks, applicable counterweight, basic seat, standard bucket, fluids full and 165 lb. (75KG) operator.

E20

Bobcat Compact Excavator

Part Number	Description	Compact Excavator	SLP in US \$
-------------	-------------	-------------------	--------------

M5591	E20 Compact Excavator		\$43,268
	Base machine which includes Enhanced Hydraulic Joystick Controls and Premium Joysticks as Std. Equipment		

Part Number	Description	Factory Installed Options	SLP in US \$
-------------	-------------	---------------------------	--------------

ORDERING PATH:

1) REQUIRED: SELECT ONE BOBCAT PACKAGE

2) OPTIONAL: SELECT INDIVIDUAL OPTIONS (NO PREMIUM ADDED)

M5591-P02-C01	Bobcat Canopy Base Package.....	N/C	
	Base canopy machine with standard equipment.		
M5591-P02-C02	Bobcat Canopy with Motion Alarm.....	\$298	
	Base canopy machine that includes travel motion alarm from the factory.		
M5591-P02-C03	Bobcat Cab with Auto Idle, Auto Shift.....	\$4,457	
	Heated Cab that includes Bluetooth radio, auto idle, auto shift travel, and 3D grab handles for cabin entry.		

Part Number	Description	OPTIONAL Selection - Factory Installed	SLP in US \$
-------------	-------------	--	--------------

Attachment Coupler & Clamp

M5591-A10-C83	Mechanical Pin-Grabber and Hydraulic Clamp.....	\$3,259	
	Includes Clamp, Mechanical Pin-Grabber, and one [1] set of non-hardened pins to be used on the attachment. Additional pin kits available through aftermarket parts.		
M5591-A10-C91	Add-on Counterweight.....	\$1,151	
	Increases operating weight by 191 lbs. Increases tail swing by 3.94 inches (100mm)		
M5591-A10-C77	French Translation Kit.....	\$181	
	Includes French Translation Manuals		

Part Number	Description	Dealer Installed Accessories - Order From Parts
-------------	-------------	---

To ensure having the correct Part Number for a Dealer Installed Accessory, obtain the excavator model and serial number and check with the Dealer Parts Department. For the most current Dealer Installed Accessories pricing, refer to BobQuote or Dealer Parts Department.

7538046	Engine Block Heater Kit.....	\$ _____
	Estimated Install Time: 2 hrs	
7538072	Add-on Counterweight Kit.....	\$ _____
	Additional Bolt-on Counterweight. Increases operating weight by 191 lbs. Increases tailswing by 3.9	
7413271	Telematics Kit 1-2t MX.....	\$ _____
	Telematics Kit for E17, E20 excavators.	
6904762	Excavator Operator Safety DVD.....	\$ _____
	Includes both English and Spanish versions on one DVD.	
6903186	Excavator Operator Training Kit.....	\$ _____
6900916	Excavator Service Safety Training Kit.....	\$ _____
7261978	Keyless Start Kit.....	\$ _____
	Provides provision for one Owner Code. Please refer to Bobcat Parts (BASS) for piece part information. Estimated Installation Time: 1 hr.	

E20
Bobcat Compact Excavator

Dealer Installed Accessories - Order From Parts		
Part Number	Description	

7255948	Mirror Kit.....	\$ _____
	Estimated Installation Time: 0.5 hr.	

E26 R-Series Bobcat Compact Excavator



Standard Equipment

2yr Machine IQ Basics Subscription with 90-Day Machine IQ Health & Security Free Trial	Dozer Blade with Float
Auto-Idle	Engine/Hydraulic Monitor with Shutdown
Auto-Shift, Two-Speed Travel	Fingertip Auxiliary Hydraulic Control
Auxiliary Hydraulics - W/ Boom Mounted Flush Face Quick Couplers	Fingertip Boom Swing Control
Boom Swing	Horn
Canopy	Hydraulic Joystick Controls
- Includes: Cup Holder, Retractable Seat Belt, Vinyl Suspension Seat	Keyed Ignition
- Roll Over Protective Structure (ROPS) – Meets Requirements of ISO 12117-2: 2008	Long Arm
- Tip Over Protective Structure (TOPS) – Meets Requirements of ISO 12117: 2000	Rubber Tracks
- Falling Object Protective Structure (FOPS) - Meets Requirements of ISO 10262	Spark Arrestor Muffler
Control Console Locks	Standard Instrument Panel
	Tier 4 Diesel Engine
	Vandalism Protection
	Halogen Work Lights
	X- Change™ Attachment Mounting System

Quick Specs

	<u>E26</u> <u>Long Arm</u>
Engine Model (Tier 4).....	D1305
Horsepower.....	24.8
Auxiliary Hydraulics Flow.....	14.2 GPM
Travel Speed (Maximum).....	3.2 MPH
Operating Weight*.....	6489 lbs.
Shipping Weight.....	6324 lbs.
Cab Height.....	96"
Width.....	61"
Length, Transport.....	170"
Dig Depth.....	9' 6"
Reach at Ground Level.....	16'
Dump Height.....	10' 5"
Arm Length.....	55.1"
Boom Swing (Left).....	70°
Boom Swing (Right).....	55°
Bucket Breakout Force.....	5652 lbf.
Tail Swing Overhang.....	3.5"

*Operating Weight includes canopy, rubber tracks, applicable counterweight, standard bucket, fluids full and 165 lb. (75KG) operator.

E26 R-Series Bobcat Compact Excavator

Part Number	Description	REQUIRED - Bobcat Packages	SLP in US \$
-------------	-------------	----------------------------	--------------

ORDERING PATH:

1) REQUIRED: SELECT ONE BOBCAT PACKAGE

2) OPTIONAL: SELECT INDIVIDUAL OPTIONS (NO PREMIUM ADDED)

M5555-P11-C01	Base Package.....	\$51,396
	Includes: Open Canopy, Standard Instrument Panel, Keyed Ignition, Vinyl Suspension Seat	
M5555-P11-C03	Canopy Plus Package.....	\$52,342
	Includes: Open Canopy, Deluxe Instrument Panel with Keyless Start, Travel Motion Alarm, Vinyl Suspension Seat	
M5555-P11-C05	Cab Package.....	\$58,827
	Includes: Enclosed Cab with HVAC, Standard Instrument Panel, Keyed Ignition, Cloth Suspension Seat, Travel Motion Alarm	
M5555-P11-C07	Cab Plus Package.....	\$59,978
	Includes: Enclosed Cab with HVAC, Deluxe Instrument Panel with Keyless Start, Cloth Suspension Seat, Travel Motion Alarm, Radio	

Part Number	Description	OPTIONAL Selection - Factory Installed	SLP in US \$
-------------	-------------	--	--------------

CAN BE SELECTED WITH A BOBCAT PACKAGE (NO PREMIUM ADDED)

Arm

M5555-R03-C02	Arm Option - Long Arm.....	Standard
---------------	----------------------------	----------

Attachment Coupler

M5555-R06-C16	Hydraulic Pin Grabber - Long Arm, Canopy.....	\$4,118
	Machine ordered with hydraulic pin-grabber. Includes one pair of attachment pins. Must order attachment pin kit PN 7329828 from PARTS for each additional attachment. Compatible with 35mm attachment pins only.	
M5555-R06-C12	Hydraulic Pin Grabber - Long Arm, Cab.....	\$4,118
	Machine ordered with hydraulic pin-grabber. Includes one pair of attachment pins. Must order attachment pin kit PN 7329828 from PARTS for each additional attachment. Compatible with 35mm attachment pins only.	

Clamp

M5555-A10-C48	Hydraulic Clamp - X-Change (Class II/III) - Long Arm.....	\$2,931
	For use with Mechanical X-Change	
M5555-A10-C65	Hydraulic Clamp - Pin Grabber (Class II/III) - Long Arm.....	\$2,931
	For use with Hydraulic Pin Grabber coupler.	

E26 R-Series

Bobcat Compact Excavator

Part Number	Description	Customer Machine IQ Health and Security Subscriptions	SLP in US \$
9987580	Customer Machine IQ Health and Security Subscription - 1 Year.....		\$200
	Basics package features + geofence, curfew, email and in-portal notifications, utilization reporting.		
9987581	Customer Machine IQ Health and Security Subscription - 2 Year.....		\$400
	Basics package features + geofence, curfew, email and in-portal notifications, utilization reporting.		
9987582	Customer Machine IQ Health and Security Subscription - 3 Year.....		\$600
	Basics package features + geofence, curfew, email and in-portal notifications, utilization reporting.		
9987583	Customer Machine IQ Health and Security Subscription - 4 Year.....		\$800
	Basics package features + geofence, curfew, email and in-portal notifications, utilization reporting.		
9987584	Customer Machine IQ Health and Security Subscription - 5 Year.....		\$1,000
	Basics package features + geofence, curfew, email and in-portal notifications, utilization reporting.		

Part Number	Description	Dealer Installed Accessories - Order From Parts
-------------	-------------	---

To ensure having the correct Part Number for a Dealer Installed Accessory, obtain the excavator model and serial number and check with the Dealer Parts Department. For the most current Dealer Installed Accessories pricing, refer to BobQuote or Dealer Parts Department.

7102902	3" Seat Belt Kit.....	\$ _____
	Must also order installation instructions PN 6989413. Estimated Installation Time: 1 hr.	
7351338	Beacon Kit - Cab	\$ _____
	Estimated Installation Time: 2 hrs.	
7351339	Beacon Kit - Canopy.....	\$ _____
	Estimated Installation Time: 2 hrs.	
7411782	Case Drain Kit.....	\$ _____
	For use with Flail Mower attachment. Estimated Installation Time: 1.5 hrs.	
7240592	Deluxe Display Panel Kit with Keyless Start.....	\$ _____
	Provides one owner code & eight user codes. Estimated Install Time: 1 hr.	
6720808	Engine Block Heater Kit.....	\$ _____
	Estimated Installation Time: 1 hr.	
6904762	Excavator Operator Safety DVD.....	\$ _____
	Includes both English and Spanish versions on one DVD.	
6903186	Excavator Operator Training Kit.....	\$ _____
6900916	Excavator Service Safety Training Kit.....	\$ _____
7352437	Fire Extinguisher Kit.....	\$ _____
	Estimated Installation Time: 1 hr.	
7276698	Guard Kit - Front.....	\$ _____
	Front guard (metal screen) attaches to cab or canopy to provide additional operator protection - Leve	
7238484	Keyless Start Kit – For Standard Panel Machines.....	\$ _____
	Provides one Owner code and two User codes (five digit). Estimated Installation Time: 1 hr.	
7352622	Load Hold Kit - Boom	\$ _____
	Estimated Installation Time: 4 hrs.	
7173148	Mirror Kit.....	\$ _____
	Estimated Installation Time: 0.5 hr.	
7351293	Radio Kit - Bluetooth (Cab only).....	\$ _____
	Must also order speaker & antenna kit PN 7228595 if not already installed. Estimated Installation Time: 1 hr.	
7261784	Radio Kit (Cab Only).....	\$ _____
	Please refer to Bobcat Parts Radio Guide for appropriate radio, harness and speaker requirements. Speaker & Antenna Kit (7266933) must be purchased in addition to the Radio Kit. Estimated Installation Time: 1 hr.	

E26 R-Series Bobcat Compact Excavator

Part Number	Description	Dealer Installed Accessories - Order From Parts
7352640	Second Auxiliary Hydraulics Kit.....	\$ _____ Estimated Installation Time: 4 hrs.
7351321	Speaker & Antenna Kit (Cab Only).....	\$ _____ Estimated Installation Time: 1 hr.
7351342	Travel Motion Alarm Kit.....	\$ _____
7372548	Work Lights LED Kit - Front, Cab.....	\$ _____ Additional front work lights (2). Estimated Installation Time 2 hrs.
7351333	Work Lights LED Kit - Front, Canopy	\$ _____ Additional front work lights (2). Estimated Installation Time 2 hrs.
7351335	Work Lights LED Kit - Rear, Cab.....	\$ _____ Additional rear work light (1). Estimated Installation Time 2 hrs.
7351337	Work Lights LED Kit - Rear, Canopy.....	\$ _____ Additional rear work light (1). Estimated Installation Time 2 hrs.

E32 R2-Series Bobcat Compact Excavator



Standard Equipment

2yr Machine IQ Basics Subscription with 90-Day
Machine IQ Health & Security Free Trial
Auto-Idle
Auto-Shift, Two-Speed Travel
Auxiliary Hydraulics with Selectable Flow
- W/ Arm Mounted Flush Face Quick Couplers
Canopy
- Includes: Cup Holder, Retractable Seat Belt,
Vinyl Suspension Seat
- Roll Over Protective Structure (ROPS) – Meets
Requirements of ISO 12117-2: 2008
- Tip Over Protective Structure (TOPS) – Meets
Requirements of ISO 12117: 2000
- Falling Object Protective Structure (FOPS) – Meets
Requirements of ISO 10262:1998
Control Console Locks
Control Pattern Selector Valve (ISO/STD)
Conventional Tail Swing

Dozer Blade with Float
Engine/Hydraulic Monitor with Shutdown
Fingertip Auxiliary Hydraulic Control
Fingertip Boom Swing Control
Horn
Hydraulic Joystick Controls
Keyed Ignition
LED Work Lights
Lift Eye
Rubber Tracks
Standard Arm
Spark Arrestor Exhaust System
Standard Instrument Panel
Tier 4 Diesel Engine
Vandalism Protection
X-Change™ Attachment Mounting System
Warranty: 2 years, or 2000 hours whichever occurs first

Quick Specs

	E32R2		
	<u>Std Arm</u>	<u>Long Arm</u>	<u>Ext Arm</u>
Engine Model (Tier 4).....	D1703	D1703	D1703
Horsepower.....	24.8	24.8	24.8
Rated Speed-RPM.....	2200	2200	2200
Auxiliary Hydraulics Flow.....	16.9 GPM	16.9 GPM	16.9 GPM
Travel Speed (Maximum).....	2.9 MPH	2.9 MPH	2.9 MPH
Operating Weight*.....	7,403 lbs.	8,269 lbs.	8,497 lbs.
Shipping Weight.....	6,981 lbs.	7,847 lbs.	8,075 lbs.
Cab Height.....	96.2"	96.2"	96.2"
Width.....	61.8"	61.8"	61.8"
Length, Transport.....	184"	187"	188"
Dig Depth.....	10' 1"	11' 1"	12' 9"
Reach at Ground Level.....	16' 3"	17' 2"	18' 9"
Dump Height.....	11' 5"	12"	12' 11"
Arm Length.....	52.2"	64.0"	54.1" - 84.3"
Boom Swing (Left).....	75°	75°	75°
Boom Swing (Right).....	55°	55°	55°
Arm Breakout Force.....	4,690 lbf.	4,074 lbf.	4,592 lbf.
Tail Swing Overhang.....	13.4"	16.9"	16.9"

*Operating Weight includes canopy, rubber tracks, applicable counterweight, standard bucket, fluids full and 165 lb. (75KG) operator.

E32 R2-Series Bobcat Compact Excavator

Part Number	Description	REQUIRED - Bobcat Packages	SLP in US \$
-------------	-------------	----------------------------	--------------

ORDERING PATH:

1) REQUIRED: SELECT ONE BOBCAT PACKAGE

2) OPTIONAL: SELECT INDIVIDUAL OPTIONS (NO PREMIUM ADDED)

M3407-P11-C01	Base Package.....	\$58,609
	Includes: Open Canopy, Standard Instrument Panel, Keyed Ignition, Vinyl Suspension Seat	
M3407-P11-C11	Canopy Deluxe Package.....	\$61,533
	Includes: Open Canopy, 3yr Machine IQ Health & Security Subscription, Keyless Start, Bobcat 7" Touch Display with Radio and Bluetooth, Vinyl Suspension Seat, Travel Motion Alarm	
M3407-P11-C05	Cab Package.....	\$66,372
	Includes: Enclosed Cab with HVAC, Standard Instrument Panel, Keyed Ignition, Cloth Suspension Seat, Travel Motion Alarm	
M3407-P11-C12	Cab Deluxe Package.....	\$69,999
	Includes: Enclosed Cab with Auto HVAC, 3yr Machine IQ Health & Security Subscription, Keyless Start, Bobcat 7" Touch Display with Radio and Bluetooth, Heated High Back Cloth Suspension Seat, Travel Motion Alarm	

Part Number	Description	OPTIONAL Selection - Factory Installed	SLP in US \$
-------------	-------------	--	--------------

CAN BE SELECTED WITH A BOBCAT PACKAGE (NO PREMIUM ADDED)

Arm

M3407-R03-C02	Arm Option - Long Arm.....	\$1,861
	Long Arm option includes max counterweight configuration, increasing operating weight by 866 lbs and tail swing by 3.5 inches. Additional bolt-on counterweight not compatible.	
M3407-R03-C03	Arm Option - Extendable Arm.....	\$5,297
	ONLY AVAILABLE WITH THE CAB DELUXE PACKAGE	
	Increases operating weight by 1094 lbs. Second Auxiliary Hydraulics (M3411-R07-C03, \$1230 SLP) will be automatically added.	

Attachment Coupler

M3407-R06-C03	Hydraulic X-Change Standard Arm.....	\$2,561
M3407-R06-C04	Hydraulic X-Change Long Arm.....	\$2,561
M3407-R06-C08	Hydraulic X-Change - Extendable Arm.....	\$2,561
M3407-R06-C10	Hydraulic Pin Grabber - Standard Arm, Canopy.....	\$4,525
	Machine ordered with hydraulic pin-grabber. Includes one pair of attachment pins. Must order attachment pin kit PN 7329828 from PARTS for each additional attachment. Compatible with 35mm attachment pins only.	
M3407-R06-C11	Hydraulic Pin Grabber - Long Arm, Canopy.....	\$4,525
	Machine ordered with hydraulic pin-grabber. Includes one pair of attachment pins. Must order attachment pin kit PN 7329828 from PARTS for each additional attachment. Compatible with 35mm attachment pins only.	
M3407-R06-C12	Hydraulic Pin Grabber - Standard Arm, Cab.....	\$4,525
	Machine ordered with hydraulic pin-grabber. Includes one pair of attachment pins. Must order attachment pin kit PN 7329828 from PARTS for each additional attachment. Compatible with 35mm attachment pins only.	
M3407-R06-C13	Hydraulic Pin Grabber - Long Arm, Cab.....	\$4,525
	Machine ordered with hydraulic pin-grabber. Includes one pair of attachment pins. Must order attachment pin kit PN 7329828 from PARTS for each additional attachment. Compatible with	

E32 R2-Series Bobcat Compact Excavator

Part Number	Description	OPTIONAL Selection - Factory Installed	SLP in US \$
-------------	-------------	--	--------------

Clamp

M3407-R08-C31	Hydraulic Clamp - X-Change (Class III) w/ Diverter Valve - Standard Arm.....	\$4,847
	For use with Mechanical X-Change or Hydraulic X-Change coupler. Includes arm mounted Diverter Valve and wrench.	
M3407-R08-C15	Hydraulic Clamp - X-Change (Class III) w/ Diverter Valve - Long Arm.....	\$4,847
	For use with Mechanical X-Change or Hydraulic X-Change coupler. Includes arm mounted Diverter Valve and wrench.	
M3407-R08-C33	Hydraulic Clamp - X-Change (Class III) - Ext Arm.....	\$2,926
	For use with Mechanical X-Change or Hydraulic X-Change coupler. Diverter Valve not available for Extendable Arm.	
M3407-R08-C43	Hydraulic Clamp - Pin Grabber (Class III) w/ Diverter Valve - Standard Arm.....	\$4,847
	For use with Hydraulic Pin Grabber coupler. Includes arm mounted Diverter Valve and wrench.	
M3407-R08-C44	Hydraulic Clamp - Pin Grabber (Class III) w/ Diverter Valve - Long Arm.....	\$4,847
	For use with Hydraulic Pin Grabber coupler. Includes arm mounted Diverter Valve and wrench.	

Rearview Camera

ONLY AVAILABLE WITH THE CAB DELUXE PACKAGE

M3407-R28-C05	Rearview Camera.....	\$576
	Factory installed Rearview Camera. Compatible only with 7" Touch Display. Must Order Cab Deluxe Package.	

Depth Check

ONLY AVAILABLE WITH THE CANOPY DELUXE OR CAB DELUXE PACKAGE

M3407-R60-C02	Depth Check - Standard Arm, Standard Blade.....	\$4,340
	Factory installed upgraded Depth Check for Standard Arm, Standard Blade excavator. Requires 7" Touch Display. Requires calibration at the dealership. Must Order Canopy Deluxe or Cab Deluxe Package with Hydraulic X-Change or Hydraulic Pin Grabber Attachment Coupler.	
M3407-R60-C04	Depth Check - Long Arm, Standard Blade.....	\$4,340
	Factory installed upgraded Depth Check for Long Arm, Standard Blade excavator. Requires 7" Touch Display. Requires calibration at the dealership. Must Order Canopy Deluxe or Cab Deluxe Package with Hydraulic X-Change or Hydraulic Pin Grabber Attachment Coupler.	

Part Number	Description	Dealer Installed Accessories - Order From Sales	SLP in US \$
-------------	-------------	---	--------------

7457286	LC510 Receiver.....	\$1,156
	Laser Receiver for use with Depth Check only. Mounting kit (7457287) must also be purchased. Estimated Installation Time: 0.25 hrs. Compatible with 7" Touch Display and previous 5" Standard Display. Not compatible with Deluxe Display Panel.	
7457287	LC510 Magnetic Mounting	\$152
	Magnetic Mounting Kit for LC510 Laser Receiver.	
7456563	LC510 Harness (ORDER FROM PARTS).....	\$_____
	Harness for LC510 laser receiver. Must be ordered with LC510 7457286, and LC510 Mounting 7457287.	
7160486	Laser Receiver, BLR2 (For use with Depth Check).....	N/A
	No longer available for order.	
7531738	Topcon Laser Transmitter, Dual Slope- (For use with Depth Check).....	\$3,627
	Dual Slope. Works with Trimble LC510 receiver	
7531739	Topcon Elevating Tripod.....	\$675
	For use with Topcon Laser Transmitter	

E32 R2-Series Bobcat Compact Excavator

Part Number	Description	Dealer Installed Accessories - Order From Sales	SLP in US \$
7488381	Front Polycarbonate Window Kit		\$1,985
	Polycarbonate window guard that mounts in front of the cab structure to restrict debris from contacting the cab's front glass window. Compatible with R2-Series E32-E55 canopy and cab, compatible with R1-Series E32, E35 canopy and cab.		
46892437	Depth Check Kit (V2) - Standard Arm, Standard Blade.....		\$4,312
	Applies to standard arm models equipped with fixed blade. Applicable to machines with R2-Series 7" Touch Display ONLY. Please refer to Laser and 3D Equipment section of the Dealer Installed tab for optional Laser Receivers that are compatible with the Depth Check System.		
46892441	Depth Check Kit (V2) - Long Arm, Standard Blade.....		\$4,312
	Applies to long arm models equipped with fixed blade. Applicable to machines with R2-Series 7" Touch Display ONLY. Please refer to Laser and 3D Equipment section of the Dealer Installed tab for optional Laser Receivers that are compatible with the Depth Check System.		

Part Number	Description	Customer Machine IQ Health and Security Subscriptions	SLP in US \$
9987580	Customer Machine IQ Health and Security Subscription - 1 Year.....		\$200
	Basics package features + geofence, curfew, email and in-portal notifications, utilization reporting.		
9987581	Customer Machine IQ Health and Security Subscription - 2 Year.....		\$400
	Basics package features + geofence, curfew, email and in-portal notifications, utilization reporting.		
9987582	Customer Machine IQ Health and Security Subscription - 3 Year.....		\$600
	Basics package features + geofence, curfew, email and in-portal notifications, utilization reporting.		
9987583	Customer Machine IQ Health and Security Subscription - 4 Year.....		\$800
	Basics package features + geofence, curfew, email and in-portal notifications, utilization reporting.		
9987584	Customer Machine IQ Health and Security Subscription - 5 Year.....		\$1,000
	Basics package features + geofence, curfew, email and in-portal notifications, utilization reporting.		

Part Number	Description	Dealer Installed Accessories - Order From Parts	SLP in US \$
-------------	-------------	---	--------------

To ensure having the correct Part Number for a Dealer Installed Accessory, obtain the excavator model and serial number and check with the Dealer Parts Department. For the most current Dealer Installed Accessories pricing, refer to BobQuote or Dealer Parts Department.

7102902	3" Seat Belt Kit.....		\$ _____
	Must also order installation instructions PN 6989413. Estimated Installation Time: 1 hr.		
7435139	Add on Counterweight Kit.....		\$ _____
	Increases weight of machine by aprx 642 lbs. Increases tail swing by 2.8". Not compatible with long and extendable arms equipped from the factory. Heavy counterweight comes with long and		
7172554	Beacon Kit.....		\$ _____
	Estimated Installation Time: 1 hr.		
7174550	Bolt-On Rubber Pad Kit - E32 Only.....		\$ _____
	For use with steel tracks only. Includes 82 pads. Estimated Installation Time: 2 hrs.		
7429624	Case Drain Kit.....		\$ _____
	For use with Flail Mower attachment. Estimated Installation Time: 1.5 hrs.		
7304683	Deflector, Louver.....		\$ _____
	Provides additional protection of engine components and deflects air flow exiting below engine. Estimated Installation Time: 0.5 hr.		
7456563	LC510 Harness (ORDER FROM PARTS).....		\$ _____
	Harness for LC510 laser reciever. Must be ordered with LC510 7457286, and LC510 Mounting 7457287.		

E32 R2-Series Bobcat Compact Excavator

Part Number	Description	Dealer Installed Accessories - Order From Parts	SLP in US \$
7246898	Depth Check BLR2 Laser Mounting Kit.....		\$ _____
	Required if using BLR2 with Depth Check. Includes Magnetic Receiver Mount and Harness. (Refer to "Order From Sales" for BLR2).		
7380853	PREVIOUS Depth Check Kit (Deluxe Display Only) - Long Arm Standard Blade		\$ _____
	Applies to long arm models equipped with fixed blade. Applicable to machines with R2-Series 7" Touch Display, 5" Standard Display, and Deluxe Instrument Panel. (M-Series = Forward Mounted Deluxe Instrumentation panel only) Please refer to Laser and 3D Equipment section of the Dealer Installed tab for optional Laser Receivers that are compatible with the Depth Check System. Not compatible with Standard Instrument Panel.		
7380857	PREVIOUS Depth Check Kit (Deluxe Display Only) - Standard Arm Standard Blade		\$ _____
	Applies to standard arm models equipped with fixed blade. Applicable to machines with R2-Series 7" Touch Display, 5" Standard Display, and Deluxe Instrument Panel. (M-Series = Forward Mounted Deluxe Instrumentation panel only) Please refer to Laser and 3D Equipment section of the Dealer Installed tab for optional Laser Receivers that are compatible with the Depth Check System. Not compatible with Standard Instrument Panel.		
7238275	Direct to Tank Kit.....		\$ _____
	Reduces back pressure on auxiliary return line. Estimated Installation Time: 1.5 hrs.		
7429623	Diverter Kit - Long Arm		\$ _____
	Estimated Installation Time: 2 hrs.		
7429622	Diverter Kit - Standard Arm		\$ _____
	Estimated Installation Time: 2 hrs.		
7188091	Engine Block Heater Kit - Kubota Engine.....		\$ _____
	Estimated Installation Time: 1 hr.		
6904762	Excavator Operator Safety DVD.....		\$ _____
	Includes both English and Spanish versions on one DVD.		
6903186	Excavator Operator Training Kit.....		\$ _____
6900916	Excavator Service Safety Training Kit.....		\$ _____
7435141	Extendable Arm Kit.....		\$ _____
	If installing on standard arm, must also install Counterweight Add-On Kit PN 7415672. Estimated Installation Time: 4 hrs.		
7306976	Fire Extinguisher Kit.....		\$ _____
	Estimated Installation Time: 1 hr.		
7320485	Guard Kit - Front.....		\$ _____
	Front guard (metal screen) attaches to cab or canopy to provide additional operator protection - Level I FOGS. Estimated Installation Time: 1.5 hr.		
7231496	HEPA Filter Kit.....		\$ _____
	Estimated Installation Time: 0.5 hr.		
7435144	Hydraulic X-Change Kit - Extendable Arm.....		\$ _____
	Estimated Installation Time: 3 hrs.		
7429628	Hydraulic X-Change Kit - Standard and Long Arm.....		\$ _____
	Estimated Installation Time: 3 hrs.		
6693245	Keyed Ignition.....		\$ _____
	Estimated Installation Time: 1 hr.		
7238484	Keyless Start Kit – For Standard Panel Machines.....		\$ _____
	Provides one Owner code and two User codes (five digit). Estimated Installation Time: 1 hr.		
7429619	Load Hold Kit - Arm.....		\$ _____
	Estimated Installation Time: 4 hrs.		
7317378	Load Hold Kit - Boom.....		\$ _____
	Estimated Installation Time: 4 hrs.		
7429627	Load Moment Alarm Kit.....		\$ _____
	Estimated Installation Time: 1 hr.		

E32 R2-Series Bobcat Compact Excavator

Part Number	Description	SLP in US \$
7435140	Long Arm Kit..... If installing on standard arm, must also install Counterweight Add-On Kit PN 7415672. Estimated Installation Time: 4 hrs.	\$ _____
7173148	Mirror Kit..... Estimated Installation Time: 0.5 hr.	\$ _____
7241562	Muffler Purifier Kit - Kubota Engine..... Estimated Installation Time: 1 hr.	\$ _____
7332467	Out Exhaust Kit - Kubota Engine..... Exhaust pipe angled outwards.	\$ _____
6988434	Radio Kit (Cab only)..... Must also order speaker & antenna kit PN 7228595 if not already installed. Estimated Installation Time: 1 hr.	\$ _____
7420941	Rearview Camera Kit..... Rearview camera kit for the 5" Std Display and 7" Touch Display. Estimated Installation Time: 1 hr.	\$ _____
7343518	Seat Back Extension Kit - Cloth..... Estimated Installation Time: 0.5 hr.	\$ _____
7343521	Seat Back Extension Kit - Vinyl..... Estimated Installation Time: 0.5 hr.	\$ _____
7429621	Second Auxilliary Kit - Extendable Arm..... Estimated Installation Time: 4 hrs.	\$ _____
7429620	Second Auxilliary Kit - Standard and Long Arm..... Estimated Installation Time: 4 hrs.	\$ _____
7177215	Sediment Bowl Kit - Kubota Engine..... Fuel sediment filter bowl.	\$ _____
7228595	Speaker & Antenna Kit (Cab Only)..... Estimated Installation Time: 1 hr.	\$ _____
7172974	Strobe Light Kit..... Estimated Installation Time: 0.75 hr.	\$ _____
7434386	Translator Literature Kit.....	\$ _____
7441840	Travel Motion Alarm Kit.....	\$ _____
7303055	Window Access Kit.....	\$ _____
7280215	Window Shade Kit (R-Series only)..... Retractable window shade, covers top cab window. Estimated Installation Time: 2 hrs.	\$ _____
7413562	Work Lights LED Kit, Cab and Canopy..... Provides 2 front mounted and 1 rear mounted LED Lights. Estimated Installation Time: 2 hrs.	\$ _____

E35 R2-Series Bobcat Compact Excavator



Standard Equipment

2yr Machine IQ Basics Subscription with 90-Day Machine IQ Health & Security Free Trial	Dozer Blade with Float
Auto-Shift, Two-Speed Travel	Engine/Hydraulic Monitor with Shutdown
Auto-Idle	Fingertip Boom Swing Control
Auxiliary Hydraulics with Selectable Flow	Horn
- W/ Arm Mounted Flush Face Quick Couplers	Hydraulic Joystick Controls
Canopy	Keyed Ignition
- Includes: Cup Holder, Retractable Seat Belt, Vinyl Suspension Seat	LED Work Lights
- Roll Over Protective Structure (ROPS) – Meets Requirements of ISO 12117-2: 2008	Lift Eye
- Tip Over Protective Structure (TOPS) – Meets Requirements of ISO 12117: 2000	Rubber Tracks
- Falling Object Protective Structure (FOPS) – Meets Requirements of ISO 10262:1998	Standard Arm
Control Console Locks	Spark Arrestor Exhaust System
Control Pattern Selector Valve (ISO/STD)	Standard Instrument Panel
	Tier 4 Diesel Engine
	Vandalism Protection
	X-Change™ Attachment Mounting System
	Warranty: 2 years, or 2000 hours whichever occurs first
	Zero Tail Swing

Quick Specs

	E35R2		
	<u>Std Arm</u>	<u>Long Arm</u>	<u>Ext Arm</u>
Engine Model (Tier 4).....	D1703	D1703	D1703
Turbocharged Diesel (Yes/No).....	No	No	No
Horsepower.....	24.8	24.8	24.8
Rated Speed-RPM.....	2200	2200	2200
Auxiliary Hydraulics Flow.....	16.9 GPM	16.9 GPM	16.9 GPM
Travel Speed (Maximum).....	2.9 MPH	2.9 MPH	2.9 MPH
Operating Weight*.....	7659	8362	8590
Shipping Weight.....	7236	7939	8167
Cab Height.....	96.2"	96.2"	96.2"
Width.....	69.7"	69.7"	69.7"
Length, Transport.....	190"	190.1"	190.4"
Dig Depth.....	10' 1"	11' 1"	12' 9"
Reach at Ground Level.....	17'	18'	19' 7"
Dump Height.....	11' 5"	12'	12' 11"
Arm Length.....	52.2"	64"	54.1" - 84.3"
Boom Swing (Left).....	75°	75°	75°
Boom Swing (Right).....	55°	55°	55°
Arm Breakout Force.....	4,690 lbf.	4,074 lbf.	4,592 lbf.
Tail Swing Overhang.....	0"	3.2"	3.2"

*Operating Weight includes canopy, rubber tracks, applicable counterweight, standard bucket, fluids full and 165 lb. (75KG) operator.

E35 R2-Series Bobcat Compact Excavator

Part Number	Description	REQUIRED - Bobcat Packages	SLP in US \$
-------------	-------------	----------------------------	--------------

ORDERING PATH:

1) REQUIRED: SELECT ONE BOBCAT PACKAGE

2) OPTIONAL: SELECT INDIVIDUAL OPTIONS (NO PREMIUM ADDED)

M3409-P11-C01	Base Package.....	\$57,232
	Includes: Open Canopy, Standard Instrument Panel, Keyed Ignition, Vinyl Suspension Seat	
M3409-P11-C11	Canopy Deluxe Package.....	\$60,156
	Includes: Open Canopy, 3yr Machine IQ Health & Security Subscription, Keyless Start, Bobcat 7" Touch Display with Radio and Bluetooth, Vinyl Suspension Seat, Travel Motion Alarm	
M3409-P11-C05	Cab Package.....	\$64,995
	Includes: Enclosed Cab with HVAC, Standard Instrument Panel, Keyed Ignition, Cloth Suspension Seat, Travel Motion Alarm	
M3409-P11-C12	Cab Deluxe Package.....	\$68,622
	Includes: Enclosed Cab with Auto HVAC, 3yr Machine IQ Health & Security Subscription, Keyless Start, Bobcat 7" Touch Display with Radio and Bluetooth, Heated High Back Cloth Suspension Seat, Travel Motion Alarm	

Part Number	Description	OPTIONAL Selection - Factory Installed	SLP in US \$
-------------	-------------	--	--------------

Arm

M3409-R03-C02	Arm Option - Long Arm.....	\$1,861
	Long Arm option includes max counterweight configuration, increasing operating weight by 703 lbs and tail swing by 3.2 inches. Additional bolt-on counterweight not compatible.	
M3409-R03-C03	Arm Option - Extendable Arm.....	\$5,297
	ONLY AVAILABLE WITH THE CAB DELUXE PACKAGE	
	Increases operating weight by 931 lbs. Second Auxiliary Hydraulics (M3409-R07-C03, \$1230 SLP) will be automatically added.	

Attachment Coupler

M3409-R06-C03	Hydraulic X-Change - Standard Arm.....	\$2,561
M3409-R06-C04	Hydraulic X-Change - Long Arm.....	\$2,561
M3409-R06-C08	Hydraulic X-Change - Extendable Arm.....	\$2,561
M3409-R06-C10	Hydraulic Pin Grabber - Standard Arm, Canopy.....	\$4,525
	Machine ordered with hydraulic pin-grabber. Includes one pair of attachment pins. Must order attachment pin kit PN 7329828 from PARTS for each additional attachment. Compatible with 35mm attachment pins only.	
M3409-R06-C11	Hydraulic Pin Grabber - Long Arm, Canopy.....	\$4,525
	Machine ordered with hydraulic pin-grabber. Includes one pair of attachment pins. Must order attachment pin kit PN 7329828 from PARTS for each additional attachment. Compatible with 35mm attachment pins only.	
M3409-R06-C12	Hydraulic Pin Grabber - Standard Arm, Cab.....	\$4,525
	Machine ordered with hydraulic pin-grabber. Includes one pair of attachment pins. Must order attachment pin kit PN 7329828 from PARTS for each additional attachment. Compatible with 35mm attachment pins only.	
M3409-R06-C13	Hydraulic Pin Grabber - Long Arm, Cab.....	\$4,525
	Machine ordered with hydraulic pin-grabber. Includes one pair of attachment pins. Must order attachment pin kit PN 7329828 from PARTS for each additional attachment. Compatible with 35mm attachment pins only.	

E35 R2-Series Bobcat Compact Excavator

Part Number	Description	OPTIONAL Selection - Factory Installed	SLP in US \$
-------------	-------------	--	--------------

Blade

M3409-R12-C02 Hydraulic Angle Blade..... \$3,385

Clamp

M3409-R08-C31 Hydraulic Clamp - X-Change (Class III) w/ Diverter Valve - Standard Arm..... \$4,847
For use with Mechanical X-Change or Hydraulic X-Change coupler. Includes arm mounted Diverter Valve and wrench.

M3409-R08-C15 Hydraulic Clamp - X-Change (Class III) w/ Diverter Valve - Long Arm..... \$4,847
For use with Mechanical X-Change or Hydraulic X-Change coupler. Includes arm mounted Diverter Valve and wrench.

M3409-R08-C33 Hydraulic Clamp - X-Change (Class III) - Ext Arm..... \$2,926
For use with Mechanical X-Change or Hydraulic X-Change coupler. Diverter Valve not available for Extendable Arm.

M3409-R08-C43 Hydraulic Clamp - Pin Grabber (Class III) w/ Diverter Valve - Standard Arm..... \$4,847
For use with Hydraulic Pin Grabber coupler. Includes arm mounted Diverter Valve and wrench.

M3409-R08-C44 Hydraulic Clamp - Pin Grabber (Class III) w/ Diverter Valve - Long Arm..... \$4,847
For use with Hydraulic Pin Grabber coupler. Includes arm mounted Diverter Valve and wrench.

Rearview Camera

ONLY AVAILABLE WITH THE CAB DELUXE PACKAGE

M3409-R28-C05 Rearview Camera..... \$576
Factory installed Rearview Camera. Compatible only with 7" Touch Display. Must Order Cab Deluxe Package.

Depth Check

ONLY AVAILABLE WITH THE CANOPY DELUXE OR CAB DELUXE PACKAGE

M3409-R60-C02 Depth Check - Standard Arm, Standard Blade..... \$4,340
Factory installed upgraded Depth Check for Standard Arm, Standard Blade excavator. Requires 7" Touch Display. Requires calibration at the dealership. Must Order Canopy Deluxe or Cab Deluxe Package with Hydraulic X-Change or Hydraulic Pin Grabber Attachment Coupler.

M3409-R60-C03 Depth Check - Standard Arm, Angle Blade..... \$4,340
Factory installed upgraded Depth Check for Standard Arm, Angle Blade excavator. Requires 7" Touch Display. Requires calibration at the dealership. Must Order Canopy Deluxe or Cab Deluxe Package with Hydraulic X-Change or Hydraulic Pin Grabber Attachment Coupler.

M3409-R60-C04 Depth Check - Long Arm, Standard Blade..... \$4,340
Factory installed upgraded Depth Check for Long Arm, Standard Blade excavator. Requires 7" Touch Display. Requires calibration at the dealership. Must Order Canopy Deluxe or Cab Deluxe Package with Hydraulic X-Change or Hydraulic Pin Grabber Attachment Coupler.

M3409-R60-C05 Depth Check - Long Arm, Angle Blade..... \$4,340
Factory installed upgraded Depth Check for Long Arm, Angle Blade excavator. Requires 7" Touch Display. Requires calibration at the dealership. Must Order Canopy Deluxe or Cab Deluxe Package with Hydraulic X-Change or Hydraulic Pin Grabber Attachment Coupler.

E35 R2-Series Bobcat Compact Excavator

Dealer Installed Accessories - Order From Sales		
Part Number	Description	SLP in US \$
7457287	LC510 Magnetic Mounting	\$152
	Magnetic Mounting Kit for LC510 Laser Receiver.	
7456563	LC510 Harness (ORDER FROM PARTS).....	\$ _____
	Harness for LC510 laser receiver. Must be ordered with LC510 7457286, and LC510 Mounting 7457287.	
7160486	Laser Receiver, BLR2 (For use with Depth Check).....	N/A
	No longer available for order.	
7531738	Topcon Laser Transmitter, Dual Slope- (For use with Depth Check).....	\$3,627
	Dual Slope. Works with Trimble LC510 receiver	
7531739	Topcon Elevating Tripod.....	\$675
	For use with Topcon Laser Transmitter	
7488381	Front Polycarbonate Window Kit	\$1,985
	Polycarbonate window guard that mounts in front of the cab structure to restrict debris from contacting the cab's front glass window. Compatible with R2-Series E32-E55 canopy and cab, compatible with R1-Series E32, E35 canopy and cab.	
46892437	Depth Check Kit (V2) - Standard Arm, Standard Blade.....	\$4,312
	Applies to standard arm models equipped with fixed blade. Applicable to machines with R2-Series 7" Touch Display ONLY. Please refer to Laser and 3D Equipment section of the Dealer Installed tab for optional Laser Receivers that are compatible with the Depth Check System.	
46892439	Depth Check Kit (V2) - Standard Arm, Angle Blade.....	\$4,162
	Applies to standard arm models equipped with angle blade. Applicable to machines with R2-Series 7" Touch Display ONLY. Please refer to Laser and 3D Equipment section of the Dealer Installed tab for optional Laser Receivers that are compatible with the Depth Check System.	
46892441	Depth Check Kit (V2) - Long Arm, Standard Blade.....	\$4,312
	Applies to long arm models equipped with fixed blade. Applicable to machines with R2-Series 7" Touch Display ONLY. Please refer to Laser and 3D Equipment section of the Dealer Installed tab for optional Laser Receivers that are compatible with the Depth Check System.	
46892443	Depth Check Kit (V2) - Long Arm, Angle Blade.....	\$4,162
	Applies to long arm models equipped with angle blade. Applicable to machines with R2-Series 7" Touch Display ONLY. Please refer to Laser and 3D Equipment section of the Dealer Installed tab for optional Laser Receivers that are compatible with the Depth Check System.	
Customer Machine IQ Health and Security Subscriptions		
Part Number	Description	SLP in US \$
9987580	Customer Machine IQ Health and Security Subscription - 1 Year.....	\$200
	Basics package features + geofence, curfew, email and in-portal notifications, utilization reporting.	
9987581	Customer Machine IQ Health and Security Subscription - 2 Year.....	\$400
	Basics package features + geofence, curfew, email and in-portal notifications, utilization reporting.	
9987582	Customer Machine IQ Health and Security Subscription - 3 Year.....	\$600
	Basics package features + geofence, curfew, email and in-portal notifications, utilization reporting.	
9987583	Customer Machine IQ Health and Security Subscription - 4 Year.....	\$800
	Basics package features + geofence, curfew, email and in-portal notifications, utilization reporting.	
9987584	Customer Machine IQ Health and Security Subscription - 5 Year.....	\$1,000
	Basics package features + geofence, curfew, email and in-portal notifications, utilization reporting.	

E35 R2-Series Bobcat Compact Excavator

Part Number	Description	Dealer Installed Accessories - Order From Parts
-------------	-------------	---

To ensure having the correct Part Number for a Dealer Installed Accessory, obtain the excavator model and serial number and check with the Dealer Parts Department. For the most current Dealer Installed Accessories pricing, refer to BobQuote or Dealer Parts Department.

7102902	3" Seat Belt Kit.....	\$ _____
	Must also order installation instructions PN 6989413. Estimated Installation Time: 1 hr.	
7435139	Add on Counterweight Kit.....	\$ _____
	Increases weight of machine by aprx 642 lbs. Increases tail swing by 2.8". Not compatible with long and extendable arms equipped from the factory. Heavy counterweight comes with long and extendable arms.	
7172554	Beacon Kit.....	\$ _____
	Estimated Installation Time: 1 hr.	
7354513	Bobcat Telematics-Machine IQ NA.....	\$ _____
7413562	Work Lights LED Kit, Cab and Canopy.....	\$ _____
	Provides 2 front mounted and 1 rear mounted LED Lights. Estimated Installation Time: 2 hrs.	
7174552	Bolt-On Rubber Pad Kit - E35 Only.....	\$ _____
	For use with steel tracks only. Includes 86 pads. Estimated Installation Time: 2 hrs.	
7429624	Case Drain Kit.....	\$ _____
	For use with Flail Mower attachment. Estimated Installation Time: 1.5 hrs.	
7304683	Deflector, Louver.....	\$ _____
	Provides additional protection of engine components and deflects air flow exiting below engine. Estimated Installation Time: 0.5 hr.	
7246898	Depth Check BLR2 Laser Mounting Kit.....	\$ _____
	Required if using BLR2 with Depth Check. Includes Magnetic Receiver Mount and Harness. (Refer to "Order From Sales" for BLR2).	
7380857	PREVIOUS Depth Check Kit (Deluxe Display Only) - Standard Arm Standard Blade	\$ _____
	Applies to standard arm models equipped with fixed blade. Applicable to machines with R2-Series 7" Touch Display, 5" Standard Display, and Deluxe Instrument Panel. (M-Series = Forward Mounted Deluxe Instrumentation panel only) Please refer to Laser and 3D Equipment section of the Dealer Installed tab for optional Laser Receivers that are compatible with the Depth Check System. Not compatible with Standard Instrument Panel.	
7380859	PREVIOUS Depth Check Kit (Deluxe Display Only) - Standard Arm Angle Blade	\$ _____
	Applies to standard arm models equipped with angle blade. Applicable to machines with R2-Series 7" Touch Display, 5" Standard Display, and Deluxe Instrument Panel. (M-Series = Forward Mounted Deluxe Instrumentation panel only) Please refer to Laser and 3D Equipment section of the Dealer Installed tab for optional Laser Receivers that are compatible with the Depth Check System. Not Compatible with Standard Instrument Panel.	
7380855	PREVIOUS Depth Check Kit (Deluxe Display Only) - Long Arm Angle Blade	\$ _____
	Applies to long arm models equipped with angle blade. Applicable to machines with R2-Series 7" Touch Display, 5" Standard Display, and Deluxe Instrument Panel. (M-Series = Forward Mounted Deluxe Instrumentation panel only) Please refer to Laser and 3D Equipment section of the Dealer Installed tab for optional Laser Receivers that are compatible with the Depth Check System. Not Compatible with Standard Instrument Panel.	
7380853	PREVIOUS Depth Check Kit (Deluxe Display Only) - Long Arm Standard Blade	\$ _____
	Applies to long arm models equipped with fixed blade. Applicable to machines with R2-Series 7" Touch Display, 5" Standard Display, and Deluxe Instrument Panel. (M-Series = Forward Mounted Deluxe Instrumentation panel only) Please refer to Laser and 3D Equipment section of the Dealer Installed tab for optional Laser Receivers that are compatible with the Depth Check System. Not compatible with Standard Instrument Panel.	
7238275	Direct to Tank Kit.....	\$ _____
	Reduces back pressure on auxiliary return line. Estimated Installation Time: 1.5 hrs.	
7429623	Diverter Kit - Long Arm	\$ _____
	Estimated Installation Time: 2 hrs.	

E35 R2-Series Bobcat Compact Excavator

Part Number	Description	Dealer Installed Accessories - Order From Parts
7429622	Diverter Kit - Standard Arm	\$ _____
	Estimated Installation Time: 2 hrs.	
7188091	Engine Block Heater Kit - Kubota Engine.....	\$ _____
	Estimated Installation Time: 1 hr.	
6904762	Excavator Operator Safety DVD.....	\$ _____
	Includes both English and Spanish versions on one DVD.	
6903186	Excavator Operator Training Kit.....	\$ _____
6900916	Excavator Service Safety Training Kit.....	\$ _____
7435141	Extendable Arm Kit.....	\$ _____
	If installing on standard arm, must also install Counterweight Add-On Kit PN 7415672. Estimated Installation Time: 4 hrs.	
7306976	Fire Extinguisher Kit.....	\$ _____
	Estimated Installation Time: 1 hr.	
7231496	HEPA Filter Kit.....	\$ _____
	Estimated Installation Time: 0.5 hr.	
7320485	Guard Kit - Front.....	\$ _____
	Front guard (metal screen) attaches to cab or canopy to provide additional operator protection - Level I FOGS. Estimated Installation Time: 1.5 hr.	
7429628	Hydraulic X-Change Kit - Standard and Long Arm.....	\$ _____
	Estimated Installation Time: 3 hrs.	
7435144	Hydraulic X-Change Kit - Extendable Arm.....	\$ _____
	Estimated Installation Time: 3 hrs.	
6693245	Keyed Ignition.....	\$ _____
	Estimated Installation Time: 1 hr.	
7238484	Keyless Start Kit – For Standard Panel Machines.....	\$ _____
	Provides one Owner code and two User codes (five digit). Estimated Installation Time: 1 hr.	
7429619	Load Hold Kit - Arm.....	\$ _____
	Estimated Installation Time: 4 hrs.	
7317378	Load Hold Kit - Boom.....	\$ _____
	Estimated Installation Time: 4 hrs.	
7429627	Load Moment Alarm Kit.....	\$ _____
	Estimated Installation Time: 1 hr.	
7435140	Long Arm Kit.....	\$ _____
	If installing on standard arm, must also install Counterweight Add-On Kit PN 7415672. Estimated Installation Time: 4 hrs.	
7173148	Mirror Kit.....	\$ _____
	Estimated Installation Time: 0.5 hr.	
7241562	Muffler Purifier Kit - Kubota Engine.....	\$ _____
	Estimated Installation Time: 1 hr.	
7332467	Out Exhaust Kit - Kubota Engine.....	\$ _____
	Exhaust pipe angled outwards.	
6988434	Radio Kit (Cab only).....	\$ _____
	Must also order speaker & antenna kit PN 7228595 if not already installed. Estimated Installation Time: 1 hr.	
7420941	Rearview Camera Kit.....	\$ _____
	Rearview camera kit for the 5" Std Display and 7" Touch Display. Estimated Installation Time: 1 hr.	
7343518	Seat Back Extension Kit - Cloth.....	\$ _____
	Estimated Installation Time: 0.5 hr.	
7343521	Seat Back Extension Kit - Vinyl.....	\$ _____
	Estimated Installation Time: 0.5 hr.	
7429621	Second Auxilliary Kit - Extendable Arm.....	\$ _____
	Estimated Installation Time: 4 hrs.	

E35 R2-Series Bobcat Compact Excavator

Part Number	Description	Dealer Installed Accessories - Order From Parts
7429620	Second Auxilliary Kit - Standard and Long Arm.....	\$ _____
	Estimated Installation Time: 4 hrs.	
7177215	Sediment Bowl Kit - Kubota Engine.....	\$ _____
	Fuel sediment filter bowl.	
7228595	Speaker & Antenna Kit (Cab Only).....	\$ _____
7172974	Strobe Light Kit.....	\$ _____
	Estimated Installation Time: 0.75 hr.	
7441840	Travel Motion Alarm Kit.....	\$ _____
7303055	Window Access Kit.....	\$ _____
	Estimated Installation Time: 0.5 hr.	

E38 R2-Series Bobcat Compact Excavator



Standard Equipment

2yr Machine IQ Basics Subscription with 90-Day Machine IQ Health & Security Free Trial	Dozer Blade with Float
Auto-Shift, Two-Speed Travel	Engine/Hydraulic Monitor with Shutdown
Auto-Idle	Fingertip Boom Swing Control
Auxiliary Hydraulics with Selectable Flow	Horn
- W/ Arm Mounted Flush Face Quick Couplers	Hydraulic Joystick Controls
Canopy	Keyed Ignition
- Includes: Cup Holder, Retractable Seat Belt, Vinyl Suspension Seat	LED Work Lights
- Roll Over Protective Structure (ROPS) – Meets Requirements of ISO 12117-2: 2008	Lift Eye
- Tip Over Protective Structure (TOPS) – Meets Requirements of ISO 12117: 2000	Rubber Tracks
- Falling Object Protective Structure (FOPS) – Meets Requirements of ISO 10262:1998	Standard Arm
Control Console Locks	Spark Arrestor Exhaust System
Control Pattern Selector Valve (ISO/STD)	Standard Instrument Panel
	Turbocharged Tier 4 Diesel Engine, Non-DPF
	Vandalism Protection
	X-Change™ Attachment Mounting System
	Warranty: 2 years, or 2000 hours whichever occurs first
	Zero Tail Swing

Quick Specs

	E38 R2		
	<u>Std Arm</u>	<u>Long Arm</u>	<u>Ext Arm</u>
Engine Model (Tier 4).....	Bobcat 1.8L	Bobcat 1.8L	Bobcat 1.8L
Turbocharged Diesel (Yes/No).....	Yes	Yes	Yes
Horsepower.....	33.2	33.2	33.2
Rated Speed-RPM.....	2500	2500	2500
Auxiliary Hydraulics Flow.....	16.9 GPM	16.9 GPM	16.9 GPM
Travel Speed (Maximum).....	2.9 MPH	2.9 MPH	2.9 MPH
Operating Weight*.....	7893	8596	8824
Shipping Weight.....	7469	8172	8400
Cab Height.....	96.2"	96.2"	96.2"
Width.....	69.7"	69.7"	69.7"
Length, Transport.....	190"	190.4"	190.4"
Dig Depth.....	10' 1"	11' 1"	12' 9"
Reach at Ground Level.....	17'	18'	19' 7"
Dump Height.....	11' 5"	12'	12' 11"
Arm Length.....	52.2"	64"	54.1" - 84.3"
Boom Swing (Left).....	75°	75°	75°
Boom Swing (Right).....	55°	55°	55°
Arm Breakout Force.....	4,690 lbf.	4,074 lbf.	4,592 lbf.
Tail Swing Overhang.....	0"	3.2"	3.2"

*Operating Weight includes canopy, rubber tracks, applicable counterweight, standard bucket, fluids full and 165 lb. (75KG) operator.

E38 R2-Series Bobcat Compact Excavator

Part Number	Description	REQUIRED - Bobcat Packages	SLP in US \$
-------------	-------------	----------------------------	--------------

1) REQUIRED: SELECT ONE BOBCAT PACKAGE

2) OPTIONAL: SELECT INDIVIDUAL OPTIONS (NO PREMIUM ADDED)

M3414-P11-C01	Base Package.....	\$72,274
	Includes: Open Canopy, Standard Instrument Panel, Keyed Ignition, Vinyl Suspension Seat	
M3414-P11-C11	Canopy Deluxe Package.....	\$75,198
	Includes: Open Canopy, 3yr Machine IQ Health & Security Subscription, Keyless Start, Bobcat 7" Touch Display with Radio and Bluetooth, Vinyl Suspension Seat, Travel Motion Alarm	
M3414-P11-C05	Cab Package.....	\$80,037
	Includes: Enclosed Cab with HVAC, Standard Instrument Panel, Keyed Ignition, Cloth Suspension Seat, Travel Motion Alarm	
M3414-P11-C12	Cab Deluxe Package.....	\$83,664
	Includes: Enclosed Cab with Auto HVAC, 3yr Machine IQ Health & Security Subscription, Keyless Start, Bobcat 7" Touch Display with Radio and Bluetooth, Heated High Back Cloth Suspension Seat, Travel Motion Alarm	

Part Number	Description	OPTIONAL Selection - Factory Installed	SLP in US \$
-------------	-------------	--	--------------

Arm

M3414-R03-C02	Arm Option - Long Arm.....	\$1,861
	Long Arm option includes max counterweight configuration, increasing operating weight by 703 lbs and tail swing by 3.2 inches. Additional bolt-on counterweight not compatible.	
M3414-R03-C03	Arm Option - Extendable Arm.....	\$5,297
	ONLY AVAILABLE WITH THE CAB DELUXE PACKAGE	
	Increases operating weight by 931 lbs. Second Auxiliary Hydraulics (M3414-R07-C03, \$1230 SLP) will be automatically added.	

Attachment Coupler

M3414-R06-C03	Hydraulic X-Change - Standard Arm.....	\$2,561
M3414-R06-C04	Hydraulic X-Change - Long Arm.....	\$2,561
M3414-R06-C08	Hydraulic X-Change - Extendable Arm.....	\$2,561
M3414-R06-C10	Hydraulic Pin Grabber - Standard Arm, Canopy.....	\$4,525
	Machine ordered with hydraulic pin-grabber. Includes one pair of attachment pins. Must order attachment pin kit PN 7329828 from PARTS for each additional attachment. Compatible with 35mm attachment pins only.	
M3414-R06-C11	Hydraulic Pin Grabber - Long Arm, Canopy.....	\$4,525
	Machine ordered with hydraulic pin-grabber. Includes one pair of attachment pins. Must order attachment pin kit PN 7329828 from PARTS for each additional attachment. Compatible with 35mm attachment pins only.	
M3414-R06-C12	Hydraulic Pin Grabber - Standard Arm, Cab.....	\$4,525
	Machine ordered with hydraulic pin-grabber. Includes one pair of attachment pins. Must order attachment pin kit PN 7329828 from PARTS for each additional attachment. Compatible with 35mm attachment pins only.	
M3414-R06-C13	Hydraulic Pin Grabber - Long Arm, Cab.....	\$4,525
	Machine ordered with hydraulic pin-grabber. Includes one pair of attachment pins. Must order attachment pin kit PN 7329828 from PARTS for each additional attachment. Compatible with 35mm attachment pins only.	

E38 R2-Series Bobcat Compact Excavator

Part Number	Description	OPTIONAL Selection - Factory Installed	SLP in US \$
-------------	-------------	--	--------------

Blade

M3414-R12-C02 Hydraulic Angle Blade..... \$3,385

Clamp

M3414-R08-C15 Hydraulic Clamp - X-Change (Class III) w/ Diverter Valve - Long Arm..... \$4,847
For use with Mechanical X-Change or Hydraulic X-Change coupler. Includes arm mounted Diverter Valve and wrench.

M3414-R08-C31 Hydraulic Clamp - X-Change (Class III) w/ Diverter Valve - Standard Arm..... \$4,847
For use with Mechanical X-Change or Hydraulic X-Change coupler. Includes arm mounted Diverter Valve and wrench.

M3414-R08-C33 Hydraulic Clamp - X-Change (Class III) - Ext Arm..... \$2,926
For use with Mechanical X-Change or Hydraulic X-Change coupler. Diverter Valve not available for Extendable Arm.

M3414-R08-C43 Hydraulic Clamp - Pin Grabber (Class III) w/ Diverter Valve - Standard Arm..... \$4,847
For use with Hydraulic Pin Grabber coupler. Includes arm mounted Diverter Valve and wrench.

M3414-R08-C44 Hydraulic Clamp - Pin Grabber (Class III) w/ Diverter Valve - Long Arm..... \$4,847
For use with Hydraulic Pin Grabber coupler. Includes arm mounted Diverter Valve and wrench.

Rearview Camera

ONLY AVAILABLE WITH THE CAB DELUXE PACKAGE

M3414-R28-C05 Rearview Camera..... \$576
Factory installed Rearview Camera. Compatible only with 7" Touch Display. Must Order Cab Deluxe Package.

Depth Check

ONLY AVAILABLE WITH THE CANOPY DELUXE OR CAB DELUXE PACKAGE

M3414-R60-C02 Depth Check - Standard Arm, Standard Blade..... \$4,340
Factory installed upgraded Depth Check for Standard Arm, Standard Blade excavator. Requires 7" Touch Display. Requires calibration at the dealership. Must Order Canopy Deluxe or Cab Deluxe Package with Hydraulic X-Change or Hydraulic Pin Grabber Attachment Coupler.

M3414-R60-C03 Depth Check - Standard Arm, Angle Blade..... \$4,340
Factory installed upgraded Depth Check for Standard Arm, Angle Blade excavator. Requires 7" Touch Display. Requires calibration at the dealership. Must Order Canopy Deluxe or Cab Deluxe Package with Hydraulic X-Change or Hydraulic Pin Grabber Attachment Coupler.

M3414-R60-C04 Depth Check - Long Arm, Standard Blade..... \$4,340
Factory installed upgraded Depth Check for Long Arm, Standard Blade excavator. Requires 7" Touch Display. Requires calibration at the dealership. Must Order Canopy Deluxe or Cab Deluxe Package with Hydraulic X-Change or Hydraulic Pin Grabber Attachment Coupler.

M3414-R60-C05 Depth Check - Long Arm, Angle Blade..... \$4,340
Factory installed upgraded Depth Check for Long Arm, Angle Blade excavator. Requires 7" Touch Display. Requires calibration at the dealership. Must Order Canopy Deluxe or Cab Deluxe Package with Hydraulic X-Change or Hydraulic Pin Grabber Attachment Coupler.

E38 R2-Series Bobcat Compact Excavator

Part Number	Description	SLP in US \$
7457286	LC510 Receiver..... Laser Receiver for use with Depth Check only. Mounting kit (7457287) must also be purchased. Estimated Installation Time: 0.25 hrs. Compatible with 7" Touch Display and previous 5" Standard Display. Not compatible with Deluxe Display Panel.	\$1,156
7457287	LC510 Magnetic Mounting Magnetic Mounting Kit for LC510 Laser Receiver.	\$152
7456563	LC510 Harness (ORDER FROM PARTS).....	\$ _____
7531738	Topcon Laser Transmitter, Dual Slope- (For use with Depth Check)..... Dual Slope. Works with Trimble LC510 receiver	\$3,627
7531739	Topcon Elevating Tripod..... For use with Topcon Laser Transmitter	\$675
7488381	Front Polycarbonate Window Kit Polycarbonate window guard that mounts in front of the cab structure to restrict debris from contacting the cab's front glass window. Compatible with R2-Series E32-E55 canopy and cab, compatible with R1-Series E32, E35 canopy and cab.	\$1,985
46892437	Depth Check Kit (V2) - Standard Arm, Standard Blade..... Applies to standard arm models equipped with fixed blade. Applicable to machines with R2-Series 7" Touch Display ONLY. Please refer to Laser and 3D Equipment section of the Dealer Installed tab for optional Laser Receivers that are compatible with the Depth Check System.	\$4,312
46892439	Depth Check Kit (V2) - Standard Arm, Angle Blade..... Applies to standard arm models equipped with angle blade. Applicable to machines with R2-Series 7" Touch Display ONLY. Please refer to Laser and 3D Equipment section of the Dealer Installed tab for optional Laser Receivers that are compatible with the Depth Check System.	\$4,162
46892441	Depth Check Kit (V2) - Long Arm, Standard Blade..... Applies to long arm models equipped with fixed blade. Applicable to machines with R2-Series 7" Touch Display ONLY. Please refer to Laser and 3D Equipment section of the Dealer Installed tab for optional Laser Receivers that are compatible with the Depth Check System.	\$4,312
46892443	Depth Check Kit (V2) - Long Arm, Angle Blade..... Applies to long arm models equipped with angle blade. Applicable to machines with R2-Series 7" Touch Display ONLY. Please refer to Laser and 3D Equipment section of the Dealer Installed tab for optional Laser Receivers that are compatible with the Depth Check System.	\$4,162

Part Number	Description	SLP in US \$
9987580	Customer Machine IQ Health and Security Subscription - 1 Year..... Basics package features + geofence, curfew, email and in-portal notifications, utilization reporting.	\$200
9987581	Customer Machine IQ Health and Security Subscription - 2 Year..... Basics package features + geofence, curfew, email and in-portal notifications, utilization reporting.	\$400
9987582	Customer Machine IQ Health and Security Subscription - 3 Year..... Basics package features + geofence, curfew, email and in-portal notifications, utilization reporting.	\$600
9987583	Customer Machine IQ Health and Security Subscription - 4 Year..... Basics package features + geofence, curfew, email and in-portal notifications, utilization reporting.	\$800
9987584	Customer Machine IQ Health and Security Subscription - 5 Year..... Basics package features + geofence, curfew, email and in-portal notifications, utilization reporting.	\$1,000

E38 R2-Series Bobcat Compact Excavator

Part Number	Description	Dealer Installed Accessories - Order From Parts
<i>To ensure having the correct Part Number for a Dealer Installed Accessory, obtain the excavator model and serial number and check with the Dealer Parts Department. For the most current Dealer Installed Accessories pricing, refer to BobQuote or Dealer Parts Department.</i>		
7102902	3" Seat Belt Kit.....	\$ _____ Must also order installation instructions PN 6989413. Estimated Installation Time: 1 hr.
7435139	Add on Counterweight Kit.....	\$ _____ Increases weight of machine by aprx 642 lbs. Increases tail swing by 2.8". Not compatible with long and extendable arms equipped from the factory. Heavy counterweight comes with long and extendable arms.
7172554	Beacon Kit.....	\$ _____ Estimated Installation Time: 1 hr.
7429624	Case Drain Kit.....	\$ _____ For use with Flail Mower attachment. Estimated Installation Time: 1.5 hrs.
7354513	Bobcat Telematics-Machine IQ NA.....	\$ _____
7304683	Deflector, Louver.....	\$ _____ Provides additional protection of engine components and deflects air flow exiting below engine. Estimated Installation Time: 0.5 hr.
7246898	Depth Check BLR2 Laser Mounting Kit.....	\$ _____ Required if using BLR2 with Depth Check. Includes Magnetic Receiver Mount and Harness. (Refer to "Order From Sales" for BLR2).
7380855	PREVIOUS Depth Check Kit (Deluxe Display Only) - Long Arm Angle Blade	\$ _____ Applies to long arm models equipped with angle blade. Applicable to machines with R2-Series 7" Touch Display, 5" Standard Display, and Deluxe Instrument Panel. (M-Series = Forward Mounted Deluxe Instrumentation panel only) Please refer to Laser and 3D Equipment section of the Dealer Installed tab for optional Laser Receivers that are compatible with the Depth Check System. Not Compatible with Standard Instrument Panel.
7380853	PREVIOUS Depth Check Kit (Deluxe Display Only) - Long Arm Standard Blade	\$ _____ Applies to long arm models equipped with fixed blade. Applicable to machines with R2-Series 7" Touch Display, 5" Standard Display, and Deluxe Instrument Panel. (M-Series = Forward Mounted Deluxe Instrumentation panel only) Please refer to Laser and 3D Equipment section of the Dealer Installed tab for optional Laser Receivers that are compatible with the Depth Check System. Not compatible with Standard Instrument Panel.
7380859	PREVIOUS Depth Check Kit (Deluxe Display Only) - Standard Arm Angle Blade	\$ _____ Applies to standard arm models equipped with angle blade. Applicable to machines with R2-Series 7" Touch Display, 5" Standard Display, and Deluxe Instrument Panel. (M-Series = Forward Mounted Deluxe Instrumentation panel only) Please refer to Laser and 3D Equipment section of the Dealer Installed tab for optional Laser Receivers that are compatible with the Depth Check System. Not Compatible with Standard Instrument Panel.
7380857	PREVIOUS Depth Check Kit (Deluxe Display Only) - Standard Arm Standard Blade	\$ _____ Applies to standard arm models equipped with fixed blade. Applicable to machines with R2-Series 7" Touch Display, 5" Standard Display, and Deluxe Instrument Panel. (M-Series = Forward Mounted Deluxe Instrumentation panel only) Please refer to Laser and 3D Equipment section of the Dealer Installed tab for optional Laser Receivers that are compatible with the Depth Check System. Not compatible with Standard Instrument Panel.
7238275	Direct to Tank Kit.....	\$ _____ Reduces back pressure on auxiliary return line. Estimated Installation Time: 1.5 hrs.
7429623	Diverter Kit - Long Arm	\$ _____ Estimated Installation Time: 2 hrs.
7429622	Diverter Kit - Standard Arm	\$ _____ Estimated Installation Time: 2 hrs.

E38 R2-Series Bobcat Compact Excavator

Part Number	Description	Dealer Installed Accessories - Order From Parts
6904762	Excavator Operator Safety DVD.....	\$ _____ Includes both English and Spanish versions on one DVD.
7372533	Engine Block Heater Kit - Bobcat Engine.....	\$ _____
6903186	Excavator Operator Training Kit.....	\$ _____
6900916	Excavator Service Safety Training Kit.....	\$ _____
7435141	Extendable Arm Kit.....	\$ _____ If installing on standard arm, must also install Counterweight Add-On Kit PN 7415672. Estimated Installation Time: 4 hrs.
7306976	Fire Extinguisher Kit.....	\$ _____ Estimated Installation Time: 1 hr.
7320485	Guard Kit - Front.....	\$ _____ Front guard (metal screen) attaches to cab or canopy to provide additional operator protection - Level I FOGS. Estimated Installation Time: 1.5 hr.
7231496	HEPA Filter Kit.....	\$ _____ Estimated Installation Time: 0.5 hr.
7435144	Hydraulic X-Change Kit - Extendable Arm.....	\$ _____ Estimated Installation Time: 3 hrs.
7429628	Hydraulic X-Change Kit - Standard and Long Arm.....	\$ _____ Estimated Installation Time: 3 hrs.
6693245	Keyed Ignition.....	\$ _____ Estimated Installation Time: 1 hr.
7238484	Keyless Start Kit – For Standard Panel Machines.....	\$ _____ Provides one Owner code and two User codes (five digit). Estimated Installation Time: 1 hr.
7429619	Load Hold Kit - Arm.....	\$ _____ Estimated Installation Time: 4 hrs.
7317378	Load Hold Kit - Boom.....	\$ _____ Estimated Installation Time: 4 hrs.
7429627	Load Moment Alarm Kit.....	\$ _____ Estimated Installation Time: 1 hr.
7435140	Long Arm Kit.....	\$ _____ If installing on standard arm, must also install Counterweight Add-On Kit PN 7415672. Estimated Installation Time: 4 hrs.
7173148	Mirror Kit.....	\$ _____ Estimated Installation Time: 0.5 hr.
7294861	Out Exhaust Kit - Bobcat Engine.....	\$ _____ Exhaust pipe angled outwards.
6988434	Radio Kit (Cab only).....	\$ _____ Must also order speaker & antenna kit PN 7228595 if not already installed. Estimated Installation Time: 1 hr.
7420941	Rearview Camera Kit.....	\$ _____ Rearview camera kit for the 5" Std Display and 7" Touch Display. Estimated Installation Time: 1 hr.
7343518	Seat Back Extension Kit - Cloth.....	\$ _____ Estimated Installation Time: 0.5 hr.
7343521	Seat Back Extension Kit - Vinyl.....	\$ _____ Estimated Installation Time: 0.5 hr.
7429621	Second Auxilliary Kit - Extendable Arm.....	\$ _____ Estimated Installation Time: 4 hrs.
7429620	Second Auxilliary Kit - Standard and Long Arm.....	\$ _____ Estimated Installation Time: 4 hrs.
7228595	Speaker & Antenna Kit (Cab Only).....	\$ _____ Estimated Installation Time: 1 hr.

E38 R2-Series Bobcat Compact Excavator

Part Number	Description	Dealer Installed Accessories - Order From Parts
7172974	Strobe Light Kit..... Estimated Installation Time: 0.75 hr.	\$ _____
7434388	Translator Literature Kit - Bobcat Engine.....	\$ _____
7441840	Travel Motion Alarm Kit.....	\$ _____
7303055	Window Access Kit..... Estimated Installation Time: 0.5 hr.	\$ _____
7280215	Window Shade Kit (R-Series only)..... Retractable window shade, covers top cab window. Estimated Installation Time: 2 hrs.	\$ _____
7413562	Work Lights LED Kit, Cab and Canopy..... Provides 2 front mounted and 1 rear mounted LED Lights. Estimated Installation Time: 2 hrs.	\$ _____

E40 R2-Series Bobcat Compact Excavator



Standard Equipment

2yr Machine IQ Basics Subscription with 90-Day Machine IQ Health & Security Free Trial	Dozer Blade with Float
Auto-Idle	Fingertip Auxiliary Hydraulic Control
Auto-Shift, Two-Speed Travel	Fingertip Boom Swing Control
Auxiliary Hydraulics with Selectable Flow	Horn
- W/ Arm Mounted Flush Face Quick Couplers	Hydraulic Joystick Controls
Canopy	Keyed Ignition
- Includes: Cup Holder, Retractable Seat Belt, Vinyl Suspension Seat	LED Work Lights
- Roll Over Protective Structure (ROPS) – Meets Requirements of ISO 12117-2: 2008	Lift Eye
- Tip Over Protective Structure (TOPS) – Meets Requirements of ISO 12117: 2000	Rubber Tracks
- Falling Object Protective Structure (FOPS) – Meets Requirements of ISO 10262:1998	Long Arm
Control Console Locks	Spark Arrestor Exhaust System
Control Pattern Selector Valve (ISO/STD)	Standard Instrument Panel
	Turbocharged Tier 4 Diesel Engine, Non-DPF
	Vandalism Protection
	X-Change™ Attachment Mounting System
	Warranty: 2 years, or 2000 hours whichever occurs first
	Minimal Tail Swing

Quick Specs

	E40 R2 Long Arm
Engine Model (Tier 4).....	Bobcat 1.8L
Horsepower.....	40.4
Rated Speed-RPM.....	2400
Auxiliary Hydraulics Flow.....	16.9 GPM
Travel Speed (Maximum).....	3.2 MPH
Operating Weight*.....	9345 lbs.
Shipping Weight.....	8937 lbs.
Cab Height.....	98.7"
Width.....	72.8"
Length, Transport.....	192.3"
Dig Depth.....	10' 10"
Reach at Ground Level.....	17' 11"
Dump Height.....	12' 3"
Arm Length.....	64"
Boom Swing (Left).....	75°
Boom Swing (Right).....	55°
Arm Breakout Force.....	4074 lbf.
Tail Swing Overhang.....	1.6"

*Operating Weight includes canopy, rubber tracks, applicable counterweight, standard bucket, fluids full and 165 lb. (75KG) operator.

E40 R2-Series Bobcat Compact Excavator

Part Number	Description	REQUIRED - Bobcat Packages	SLP in US \$
-------------	-------------	----------------------------	--------------

ORDERING PATH:

1) **REQUIRED: SELECT ONE BOBCAT PACKAGE**

2) **OPTIONAL: SELECT INDIVIDUAL OPTIONS (NO PREMIUM ADDED)**

M3415-P11-C01	Base Package.....	\$69,905
	Includes: Open Canopy, Standard Instrument Panel, Keyed Ignition, Vinyl Suspension Seat	
M3415-P11-C03	Canopy Plus Package.....	\$70,819
	Includes: Open Canopy, Deluxe Instrument Panel with Keyless Start, Travel Motion Alarm, Vinyl Suspension Seat	
M3415-P11-C05	Cab Package.....	\$77,668
	Includes: Enclosed Cab with HVAC, Standard Instrument Panel, Keyed Ignition, Cloth Suspension Seat, Travel Motion Alarm	
M3415-P11-C07	Cab Plus Package.....	\$78,780
	Includes: Enclosed Cab with HVAC, Deluxe Instrument Panel with Keyless Start, Cloth Suspension Seat, Travel Motion Alarm, Radio	

Part Number	Description	OPTIONAL Selection - Factory Installed	SLP in US \$
-------------	-------------	--	--------------

CAN BE SELECTED WITH A BOBCAT PACKAGE (NO PREMIUM ADDED)

Arm

M3415-R03-C02	Arm Option - Long Arm.....	Standard
---------------	----------------------------	----------

Attachment Coupler

M3415-R06-C04	Hydraulic X-Change - Long Arm.....	\$2,561
M3415-R06-C11	Hydraulic Pin Grabber - Long Arm, Canopy.....	\$4,525
	Machine ordered with hydraulic pin-grabber. Includes one pair of attachment pins. Must order attachment pin kit PN 7329828 from PARTS for each additional attachment. Compatible with 35mm attachment pins only.	
M3415-R06-C13	Hydraulic Pin Grabber - Long Arm, Cab.....	\$4,525
	Machine ordered with hydraulic pin-grabber. Includes one pair of attachment pins. Must order attachment pin kit PN 7329828 from PARTS for each additional attachment. Compatible with 35mm attachment pins only.	

Blade

M3415-R12-C02	Hydraulic Angle Blade.....	\$3,385
---------------	----------------------------	---------

Clamp

M3415-R08-C15	Hydraulic Clamp - X-Change (Class III) w/ Diverter Valve - Long Arm.....	\$4,847
	For use with Mechanical X-Change or Hydraulic X-Change coupler. Includes arm mounted Diverter Valve and wrench.	
M3415-R08-C44	Hydraulic Clamp - Pin Grabber (Class III) w/ Diverter Valve - Long Arm.....	\$4,847
	For use with Hydraulic Pin Grabber coupler. Includes arm mounted Diverter Valve and wrench.	

E40 R2-Series Bobcat Compact Excavator

Part Number	Description	Dealer Installed Accessories - Order From Sales	SLP in US \$
7457286	LC510 Receiver.....	Laser Receiver for use with Depth Check only. Mounting kit (7457287) must also be purchased. Estimated Installation Time: 0.25 hrs. Compatible with 7" Touch Display and previous 5" Standard Display. Not compatible with Deluxe Display Panel.	\$1,156
7457287	LC510 Magnetic Mounting	Magnetic Mounting Kit for LC510 Laser Receiver.	\$152
7456563	LC510 Harness (ORDER FROM PARTS).....	Harness for LC510 laser receiver. Must be ordered with LC510 7457286, and LC510 Mounting 7457287.	\$_____
7160486	Laser Receiver, BLR2 (For use with Depth Check).....	No longer available for order.	N/A
7531738	Topcon Laser Transmitter, Dual Slope- (For use with Depth Check).....	Dual Slope. Works with Trimble LC510 receiver	\$3,627
7531739	Topcon Elevating Tripod.....	For use with Topcon Laser Transmitter	\$675
7488381	Front Polycarbonate Window Kit	Polycarbonate window guard that mounts in front of the cab structure to restrict debris from contacting the cab's front glass window. Compatible with R2-Series E32-E55 canopy and cab, compatible with R1-Series E32, E35 canopy and cab.	\$1,985

Part Number	Description	Customer Machine IQ Health and Security Subscriptions	SLP in US \$
9987580	Customer Machine IQ Health and Security Subscription - 1 Year.....	Basics package features + geofence, curfew, email and in-portal notifications, utilization reporting.	\$200
9987581	Customer Machine IQ Health and Security Subscription - 2 Year.....	Basics package features + geofence, curfew, email and in-portal notifications, utilization reporting.	\$400
9987582	Customer Machine IQ Health and Security Subscription - 3 Year.....	Basics package features + geofence, curfew, email and in-portal notifications, utilization reporting.	\$600
9987583	Customer Machine IQ Health and Security Subscription - 4 Year.....	Basics package features + geofence, curfew, email and in-portal notifications, utilization reporting.	\$800
9987584	Customer Machine IQ Health and Security Subscription - 5 Year.....	Basics package features + geofence, curfew, email and in-portal notifications, utilization reporting.	\$1,000

Part Number	Description	Dealer Installed Accessories - Order From Parts
-------------	-------------	---

To ensure having the correct Part Number for a Dealer Installed Accessory, obtain the excavator model and serial number and check with the Dealer Parts Department. For the most current Dealer Installed Accessories pricing, refer to BobQuote or Dealer Parts Department.

7102902	3" Seat Belt Kit.....	Must also order installation instructions PN 6989413. Estimated Installation Time: 1 hr.	\$_____
7172554	Beacon Kit.....	Estimated Installation Time: 1 hr.	\$_____
7354513	Bobcat Telematics-Machine IQ NA.....		\$_____
7429624	Case Drain Kit.....	For use with Flail Mower attachment. Estimated Installation Time: 1.5 hrs.	\$_____
7304683	Deflector, Louver.....	Provides additional protection of engine components and deflects air flow exiting below engine. Estimated Installation Time: 0.5 hr.	\$_____

E40 R2-Series Bobcat Compact Excavator

Part Number	Description	Dealer Installed Accessories - Order From Parts
7246898	Depth Check BLR2 Laser Mounting Kit.....	\$ _____ Required if using BLR2 with Depth Check. Includes Magnetic Receiver Mount and Harness. (Refer to "Order From Sales" for BLR2).
7380853	PREVIOUS Depth Check Kit (Deluxe Display Only) - Long Arm Standard Blade	\$ _____ Applies to long arm models equipped with fixed blade. Applicable to machines with R2-Series 7" Touch Display, 5" Standard Display, and Deluxe Instrument Panel. (M-Series = Forward Mounted Deluxe Instrumentation panel only) Please refer to Laser and 3D Equipment section of the Dealer Installed tab for optional Laser Receivers that are compatible with the Depth Check System. Not compatible with Standard Instrument Panel.
7380855	PREVIOUS Depth Check Kit (Deluxe Display Only) - Long Arm Angle Blade	\$ _____ Applies to long arm models equipped with angle blade. Applicable to machines with R2-Series 7" Touch Display, 5" Standard Display, and Deluxe Instrument Panel. (M-Series = Forward Mounted Deluxe Instrumentation panel only) Please refer to Laser and 3D Equipment section of the Dealer Installed tab for optional Laser Receivers that are compatible with the Depth Check System. Not Compatible with Standard Instrument Panel.
7238275	Direct to Tank Kit.....	\$ _____ Reduces back pressure on auxiliary return line. Estimated Installation Time: 1.5 hrs.
7429623	Diverter Kit - Long Arm	\$ _____ Estimated Installation Time: 2 hrs.
7372533	Engine Block Heater Kit - Bobcat Engine.....	\$ _____ Estimated Installation Time: 0.25 hr.
6904762	Excavator Operator Safety DVD.....	\$ _____ Includes both English and Spanish versions on one DVD.
6903186	Excavator Operator Training Kit.....	\$ _____
6900916	Excavator Service Safety Training Kit.....	\$ _____
7306976	Fire Extinguisher Kit.....	\$ _____ Estimated Installation Time: 1 hr.
7320485	Guard Kit - Front.....	\$ _____ Front guard (metal screen) attaches to cab or canopy to provide additional operator protection - Level I FOGS. Estimated Installation Time: 1.5 hr.
7231496	HEPA Filter Kit.....	\$ _____ Estimated Installation Time: 0.5 hr.
7524384	Hydraulic X-Change Kit.....	\$ _____
6693245	Keyed Ignition.....	\$ _____ Estimated Installation Time: 1 hr.
7238484	Keyless Start Kit – For Standard Panel Machines.....	\$ _____ Provides one Owner code and two User codes (five digit). Estimated Installation Time: 1 hr.
7429619	Load Hold Kit - Arm.....	\$ _____ Estimated Installation Time: 4 hrs.
7317378	Load Hold Kit - Boom.....	\$ _____ Estimated Installation Time: 4 hrs.
7429627	Load Moment Alarm Kit.....	\$ _____ Estimated Installation Time: 1 hr.
7173148	Mirror Kit.....	\$ _____ Estimated Installation Time: 0.5 hr.
7294861	Out Exhaust Kit - Bobcat Engine.....	\$ _____ Exhaust pipe angled outwards.
7343521	Seat Back Extension Kit - Vinyl.....	\$ _____ Estimated Installation Time: 0.5 hr.
7429620	Second Auxilliary Kit - Standard and Long Arm.....	\$ _____ Estimated Installation Time: 4 hrs.

E40 R2-Series Bobcat Compact Excavator

Part Number	Description	Dealer Installed Accessories - Order From Parts
7228595	Speaker & Antenna Kit (Cab Only)..... Estimated Installation Time: 1 hr.	\$ _____
7391013	Steel Track Kit..... Estimated Installation Time: 4 hrs.	\$ _____
7172974	Strobe Light Kit..... Estimated Installation Time: 0.75 hr.	\$ _____
7434388	Translator Literature Kit - Bobcat Engine.....	\$ _____
7441840	Travel Motion Alarm Kit.....	\$ _____
7303055	Window Access Kit..... Estimated Installation Time: 0.5 hr.	\$ _____
7280215	Window Shade Kit (R-Series only)..... Retractable window shade, covers top cab window. Estimated Installation Time: 2 hrs.	\$ _____
7413562	Work Lights LED Kit, Cab and Canopy..... Provides 2 front mounted and 1 rear mounted LED Lights. Estimated Installation Time: 2 hrs.	\$ _____
7343518	Seat Back Extension Kit - Cloth..... Estimated Installation Time: 0.5 hr.	\$ _____
6988434	Radio Kit (Cab only)..... Must also order speaker & antenna kit PN 7228595 if not already installed. Estimated Installation Time: 1 hr.	\$ _____

E48 R2-Series Bobcat Compact Excavator



Standard Equipment

2yr Machine IQ Basics Subscription with 90-Day
Machine IQ Health & Security Free Trial
Auto-Idle
Auto-Shift, Two-Speed Travel
Auxiliary Hydraulics with Selectable Flow
- W/ Arm Mounted Flush Face Quick Couplers
Canopy
- Includes: Cup Holder, Retractable Seat Belt,
Vinyl Suspension Seat
- Roll Over Protective Structure (ROPS) – Meets
Requirements of ISO 12117-2: 2008
- Tip Over Protective Structure (TOPS) – Meets
Requirements of ISO 12117: 2000
- Falling Object Protective Structure (FOPS) – Meets
Requirements of ISO 10262
Control Console Locks
Control Pattern Selector Valve (ISO/STD)

Dozer Blade with Float
Fingertip Auxiliary Hydraulic Control
Fingertip Boom Swing Control
Horn
Hydraulic Joystick Controls
Keyless Start
LED Work Lights
Lift Eye
Rubber Tracks
Standard Arm
Spark Arrestor
Deluxe Instrument Panel
Turbocharged Diesel Engine, Tier 4, Non DPf
Vandalism Protection
X- Change™ Attachment Mounting System
Warranty: 2 years, or 2000 hours whichever occurs first
Conventional Tail Swing

Quick Specs

	E48 R2		
	<u>Std Arm</u>	<u>Long Arm</u>	<u>Ext Arm</u>
Engine Model (Tier 4).....	Bobcat 1.8L	Bobcat 1.8L	Bobcat 1.8L
Horsepower.....	42.6	42.6	42.6
Rated Speed-RPM.....	2200	2200	2200
Auxiliary Hydraulics Flow.....	20.0 GPM	20.0 GPM	20.0 GPM
Travel Speed (Maximum).....	3.3 MPH	3.3 MPH	3.3 MPH
Operating Weight*.....	9830 lbs.	10,425 lbs.	10,666 lbs.
Shipping Weight.....	9609 lbs.	10,204 lbs.	10,445 lbs.
Cab Height.....	99.1"	99.1"	99.1"
Width.....	72.8"	72.8"	72.8"
Length, Transport.....	201.7"	201.7"	201.7"
Dig Depth.....	10' 5"	11' 4"	12' 4"
Reach at Ground Level.....	17' 3"	18' 3"	19' 2"
Dump Height.....	12' 7"	13' 2"	13' 8"
Arm Length.....	55.1"	66.9"	55.1" - 79.0"
Boom Swing (Left).....	75°	75°	75°
Boom Swing (Right).....	50°	50°	50°
Arm Breakout Force.....	5820 lbf.	5083 lbf.	5852 lbf.
Tail Swing Overhang.....	12.0"	12.8"	12.8"

*Operating Weight includes canopy, rubber tracks, applicable counterweight, standard bucket, fluids full and 165 lb. (75KG) operator.

E48 R2-Series Bobcat Compact Excavator

Part Number	Description	REQUIRED - Bobcat Packages	SLP in US \$
-------------	-------------	----------------------------	--------------

ORDERING PATH:

1) **REQUIRED: SELECT ONE BOBCAT PACKAGE**

2) **OPTIONAL: SELECT INDIVIDUAL OPTIONS (NO PREMIUM ADDED)**

M3417-P11-C03	Canopy Plus Package		\$77,377
	Includes: Open Canopy, Deluxe Instrument Panel with Keyless Start, Travel Motion Alarm, Vinyl Suspension Seat		
M3417-P11-C11	Canopy Deluxe Package.....		\$79,974
	Includes: Open Canopy, 3yr Machine IQ Health & Security Subscription, Keyless Start, Bobcat 7" Touch Display with Radio and Bluetooth, Vinyl Suspension Seat, Travel Motion Alarm		
M3417-P11-C07	Cab Plus Package.....		\$85,923
	Includes: Enclosed Cab with HVAC, Deluxe Instrument Panel with Keyless Start, Cloth Suspension Seat, Travel Motion Alarm, Radio		
M3417-P11-C12	Cab Deluxe Package.....		\$89,408
	Includes: Enclosed Cab with Auto HVAC, 3yr Machine IQ Health & Security Subscription, Keyless Start, Bobcat 7" Touch Display with Radio and Bluetooth, Heated High Back Cloth Suspension Seat, Travel Motion Alarm		

Part Number	Description	OPTIONAL Selection - Factory Installed	SLP in US \$
-------------	-------------	--	--------------

CAN BE SELECTED WITH A BOBCAT PACKAGE (NO PREMIUM ADDED)

Arm

M3417-R03-C02	Arm Option - Long Arm.....		\$2,448
	Long Arm option includes larger counterweight than standard arm, increasing operating weight by 595 lbs., tail swing by 0.8 when compared to standard equipment. Additional bolt-on counterweight is available via AMP, dealer install.		
M3417-R03-C03	Arm Option- Extendable Arm.....		\$7,869
	ONLY AVAILABLE WITH THE CAB DELUXE PACKAGE		
	Increases operating weight by 836 lbs. Second Auxiliary Hydraulics (M3417-R07-C03, \$1712 SLP) will be automatically added.		

Attachment Coupler

M3417-R06-C03	Hydraulic X-Change - Standard Arm.....		\$2,561
M3417-R06-C04	Hydraulic X-Change- Long Arm.....		\$2,561
M3417-R06-C08	Hydraulic X-Change - Extendable Arm.....		\$2,561
M3417-R06-C10	Hydraulic Pin Grabber - Standard Arm, Canopy.....		\$5,759
	Machine ordered with hydraulic pin-grabber. Includes one pair of attachment pins. Must order attachment pin kit PN 46938829 from PARTS for each additional attachment. Compatible with 45mm attachment pins only.		
M3417-R06-C11	Hydraulic Pin Grabber - Long Arm, Canopy.....		\$5,759
	Machine ordered with hydraulic pin-grabber. Includes one pair of attachment pins. Must order attachment pin kit PN 46938829 from PARTS for each additional attachment. Compatible with 45mm attachment pins only.		
M3417-R06-C12	Hydraulic Pin Grabber - Standard Arm, Cab.....		\$5,759
	Machine ordered with hydraulic pin-grabber. Includes one pair of attachment pins. Must order attachment pin kit PN 46938829 from PARTS for each additional attachment. Compatible with 45mm attachment pins only.		

Prices and Specifications

Subject to Change Without Notice

Check BobcatNET Pricing Homepage for current Canadian exchange rate.

Compact Excavators

All Prices in U.S. Dollars

North American Suggested List Prices

2026 Price Book

Page 39 of 62

E48 R2-Series Bobcat Compact Excavator

Part Number	Description	OPTIONAL Selection - Factory Installed	SLP in US \$
-------------	-------------	--	--------------

M3417-R06-C13	Hydraulic Pin Grabber - Long Arm, Cab.....	\$5,759
	Machine ordered with hydraulic pin-grabber. Includes one pair of attachment pins. Must order attachment pin kit PN 46938829 from PARTS for each additional attachment. Compatible with 45mm attachment pins only.	

Blade

M3417-R12-C02	Hydraulic Angle Blade.....	\$3,385
---------------	----------------------------	---------

Clamp

M3417-R08-C28	Hydraulic Clamp X-Change (Class IV) w/ Diverter Valve - Standard Arm.....	\$4,847
	For use with Mechanical X-Change or Hydraulic X-Change coupler. Includes arm mounted	
M3417-R08-C29	Hydraulic Clamp X-Change (Class IV) w/ Diverter Valve - Long Arm.....	\$4,847
	For use with Mechanical X-Change or Hydraulic X-Change coupler. Includes arm mounted	
M3417-R08-C33	Hydraulic Clamp X-Change (Class IV) - Ext Arm.....	\$3,318
	For use with Mechanical X-Change or Hydraulic X-Change coupler. Diverter Valve not available for Extendable Arm.	
M3417-R08-C45	Hydraulic Clamp - Pin Grabber (Class IV) w/ Diverter Valve - Standard Arm.....	\$4,847
	For use with Hydraulic Pin Grabber coupler. Includes arm mounted Diverter Valve and wrench.	
M3417-R08-C46	Hydraulic Clamp - Pin Grabber (Class IV) w/ Diverter Valve - Long Arm.....	\$4,847
	For use with Hydraulic Pin Grabber coupler. Includes arm mounted Diverter Valve and wrench.	

Rearview Camera

ONLY AVAILABLE WITH THE CAB DELUXE PACKAGE

M3417-R28-C05	Rearview Camera.....	\$576
	Factory installed Rearview Camera. Compatible only with 7" Touch Display. Must Order Cab Deluxe Package.	

Depth Check

ONLY AVAILABLE WITH THE CANOPY DELUXE OR CAB DELUXE PACKAGE

M3417-R60-C02	Depth Check - Standard Arm, Standard Blade.....	\$4,340
	Factory installed upgraded Depth Check for Standard Arm, Standard Blade excavator. Requires 7" Touch Display. Requires calibration at the dealership. Must Order Canopy Deluxe or Cab Deluxe Package with Hydraulic X-Change or Hydraulic Pin Grabber Attachment Coupler.	
M3417-R60-C03	Depth Check - Standard Arm, Angle Blade.....	\$4,340
	Factory installed upgraded Depth Check for Standard Arm, Angle Blade excavator. Requires 7" Touch Display. Requires calibration at the dealership. Must Order Canopy Deluxe or Cab Deluxe Package with Hydraulic X-Change or Hydraulic Pin Grabber Attachment Coupler.	
M3417-R60-C04	Depth Check - Long Arm, Standard Blade.....	\$4,340
	Factory installed upgraded Depth Check for Long Arm, Standard Blade excavator. Requires 7" Touch Display. Requires calibration at the dealership. Must Order Canopy Deluxe or Cab Deluxe Package with Hydraulic X-Change or Hydraulic Pin Grabber Attachment Coupler.	
M3417-R60-C05	Depth Check - Long Arm, Angle Blade.....	\$4,340
	Factory installed upgraded Depth Check for Long Arm, Angle Blade excavator. Requires 7" Touch Display. Requires calibration at the dealership. Must Order Canopy Deluxe or Cab Deluxe Package with Hydraulic X-Change or Hydraulic Pin Grabber Attachment Coupler.	

E48 R2-Series Bobcat Compact Excavator

Part Number	Description	SLP in US \$
7457286	LC510 Receiver..... Laser Receiver for use with Depth Check only. Mounting kit (7457287) must also be purchased. Estimated Installation Time: 0.25 hrs. Compatible with 7" Touch Display and previous 5" Standard Display. Not compatible with Deluxe Display Panel.	\$1,156
7457287	LC510 Magnetic Mounting Magnetic Mounting Kit for LC510 Laser Receiver.	\$152
7456563	LC510 Harness (ORDER FROM PARTS)..... Harness for LC510 laser receiver. Must be ordered with LC510 7457286, and LC510 Mounting 7457287.	\$_____
7160486	Laser Receiver, BLR2 (For use with Depth Check)..... No longer available for order.	N/A
7531738	Topcon Laser Transmitter, Dual Slope- (For use with Depth Check)..... Dual Slope. Works with Trimble LC510 receiver	\$3,627
7531739	Topcon Elevating Tripod..... For use with Topcon Laser Transmitter	\$675
7488381	Front Polycarbonate Window Kit Polycarbonate window guard that mounts in front of the cab structure to restrict debris from contacting the cab's front glass window. Compatible with R2-Series E32-E55 canopy and cab, compatible with R1-Series E32, E35 canopy and cab.	\$1,985
46892445	Depth Check Kit (V2) - Standard Arm, Standard Blade..... Applies to standard arm models equipped with fixed blade. Applicable to machines with R2-Series 7" Touch Display ONLY. Please refer to Laser and 3D Equipment section of the Dealer Installed tab for optional Laser Receivers that are compatible with the Depth Check System.	\$4,312
46892447	Depth Check Kit (V2) - Standard Arm, Angle Blade..... Applies to standard arm models equipped with angle blade. Applicable to machines with R2-Series 7" Touch Display ONLY. Please refer to Laser and 3D Equipment section of the Dealer Installed tab for optional Laser Receivers that are compatible with the Depth Check System.	\$4,162
46892449	Depth Check Kit (V2) - Long Arm, Standard Blade..... Applies to long arm models equipped with fixed blade. Applicable to machines with R2-Series 7" Touch Display ONLY. Please refer to Laser and 3D Equipment section of the Dealer Installed tab for optional Laser Receivers that are compatible with the Depth Check System.	\$4,312
46892451	Depth Check Kit (V2) - Long Arm, Angle Blade..... Applies to long arm models equipped with angle blade. Applicable to machines with R2-Series 7" Touch Display ONLY. Please refer to Laser and 3D Equipment section of the Dealer Installed tab for optional Laser Receivers that are compatible with the Depth Check System.	\$4,162

Part Number	Description	SLP in US \$
9987580	Customer Machine IQ Health and Security Subscription - 1 Year..... Basics package features + geofence, curfew, email and in-portal notifications, utilization reporting.	\$200
9987581	Customer Machine IQ Health and Security Subscription - 2 Year..... Basics package features + geofence, curfew, email and in-portal notifications, utilization reporting.	\$400
9987582	Customer Machine IQ Health and Security Subscription - 3 Year..... Basics package features + geofence, curfew, email and in-portal notifications, utilization reporting.	\$600
9987583	Customer Machine IQ Health and Security Subscription - 4 Year..... Basics package features + geofence, curfew, email and in-portal notifications, utilization reporting.	\$800
9987584	Customer Machine IQ Health and Security Subscription - 5 Year..... Basics package features + geofence, curfew, email and in-portal notifications, utilization reporting.	\$1,000

E48 R2-Series Bobcat Compact Excavator

Part Number	Description	Dealer Installed Accessories - Order From Parts
----------------	-------------	---

To ensure having the correct Part Number for a Dealer Installed Accessory, obtain the excavator model and serial number and check with the Dealer Parts Department. For the most current Dealer Installed Accessories pricing, refer to BobQuote or Dealer Parts Department.

7102902	3" Seat Belt Kit.....	\$ _____
	Must also order installation instructions PN 6989413. Estimated Installation Time: 1 hr.	
7172554	Beacon Kit.....	\$ _____
	Estimated Installation Time: 1 hr.	
7354513	Bobcat Telematics-Machine IQ NA.....	\$ _____
7192422	Bolt-On Rubber Pad Kit – E42 Only.....	\$ _____
	For use with steel tracks only. Includes 94 pads. Estimated Installation Time: 2 hrs.	
7336205	Cab Door Kit.....	\$ _____
	Estimated Installation Time: 1.5 hrs.	
7324003	Cab Kit.....	\$ _____
	Estimated Installation Time: 1.5 hrs.	
7391017	Canopy Kit.....	\$ _____
	Estimated Installation Time: 2 hrs.	
7393097	Case Drain Kit.....	\$ _____
	For use with Flail Mower attachment. Estimated Installation Time: 2 hrs.	
7378231	CI Coupler Kit (Common Interface).....	\$ _____
	Estimated Installation Time: 1 hr.	
7350483	Counterweight, Add-On Kit.....	\$ _____
	Required for conversion from standard arm to long or extendable arm for E42. Can be used on standard arm configuration for E50. Not compatible with long or extendable arm configurations for E50. Shipping weight = 500 lbs. Increases tail swing by 2.5". Estimated Installation Time: 1 hr.	
7304683	Deflector, Louver.....	\$ _____
	Provides additional protection of engine components and deflects air flow exiting below engine. Estimated Installation Time: 0.5 hr.	
7246898	Depth Check BLR2 Laser Mounting Kit.....	\$ _____
	Required if using BLR2 with Depth Check. Includes Magnetic Receiver Mount and Harness. (Refer to "Order From Sales" for BLR2).	
7380855	PREVIOUS Depth Check Kit (Deluxe Display Only) - Long Arm Angle Blade	\$ _____
	Applies to long arm models equipped with angle blade. Applicable to machines with R2-Series 7" Touch Display, 5" Standard Display, and Deluxe Instrument Panel. (M-Series = Forward Mounted Deluxe Instrumentation panel only) Please refer to Laser and 3D Equipment section of the Dealer Installed tab for optional Laser Receivers that are compatible with the Depth Check System. Not Compatible with Standard Instrument Panel.	
7380853	PREVIOUS Depth Check Kit (Deluxe Display Only) - Long Arm Standard Blade	\$ _____
	Applies to long arm models equipped with fixed blade. Applicable to machines with R2-Series 7" Touch Display, 5" Standard Display, and Deluxe Instrument Panel. (M-Series = Forward Mounted Deluxe Instrumentation panel only) Please refer to Laser and 3D Equipment section of the Dealer Installed tab for optional Laser Receivers that are compatible with the Depth Check System. Not compatible with Standard Instrument Panel.	
7380859	PREVIOUS Depth Check Kit (Deluxe Display Only) - Standard Arm Angle Blade	\$ _____
	Applies to standard arm models equipped with angle blade. Applicable to machines with R2-Series 7" Touch Display, 5" Standard Display, and Deluxe Instrument Panel. (M-Series = Forward Mounted Deluxe Instrumentation panel only) Please refer to Laser and 3D Equipment section of the Dealer Installed tab for optional Laser Receivers that are compatible with the Depth Check System. Not Compatible with Standard Instrument Panel.	

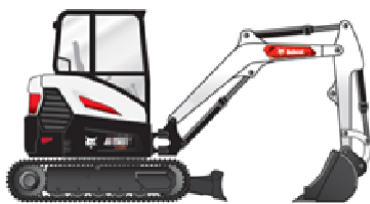
E48 R2-Series Bobcat Compact Excavator

Part Number	Dealer Installed Accessories - Order From Parts	
7380857	PREVIOUS Depth Check Kit (Deluxe Display Only) - Standard Arm Standard Blade	\$ _____
	Applies to standard arm models equipped with fixed blade. Applicable to machines with R2-Series 7" Touch Display, 5" Standard Display, and Deluxe Instrument Panel. (M-Series = Forward Mounted Deluxe Instrumentation panel only) Please refer to Laser and 3D Equipment section of the Dealer Installed tab for optional Laser Receivers that are compatible with the Depth Check System. Not compatible with Standard Instrument Panel.	
7391016	Direct to Tank Kit.....	\$ _____
	Estimated Installation Time: 1.5 hrs.	
7394827	Diverter Kit - Long Arm	\$ _____
	Estimated Installation Time: 2 hrs.	
7394826	Diverter Kit - Standard Arm	\$ _____
	Estimated Installation Time: 2 hrs.	
7372533	Engine Block Heater Kit - Bobcat Engine.....	\$ _____
	Estimated Installation Time: 0.25 hr.	
7382106	Extendable Arm Kit.....	\$ _____
	If installing on standard arm, must also install Counterweight Add-On Kit PN 7350483. Estimated Installation Time: 4 hrs.	
7306976	Fire Extinguisher Kit.....	\$ _____
	Estimated Installation Time: 1 hr.	
6904762	Excavator Operator Safety DVD.....	\$ _____
	Includes both English and Spanish versions on one DVD.	
6903186	Excavator Operator Training Kit.....	\$ _____
6900916	Excavator Service Safety Training Kit.....	\$ _____
7383343	Geith Hydraulic Pin Grabber Kit.....	\$ _____
	Estimated Installation Time: 6 hrs.	
7320485	Guard Kit - Front.....	\$ _____
	Front guard (metal screen) attaches to cab or canopy to provide additional operator protection - Level I FOGS. Estimated Installation Time: 1.5 hr.	
7461223	Hydraulic X-Change Kit - Extendable Arm.....	\$ _____
7444442	Hydraulic X-Change Kit - Standard and Long Arm.....	\$ _____
7231496	HEPA Filter Kit.....	\$ _____
	Estimated Installation Time: 0.5 hr.	
6693245	Keyed Ignition.....	\$ _____
	Estimated Installation Time: 1 hr.	
7408605	Load Hold Kit - Arm	\$ _____
	Estimated Installation Time: 4 hrs.	
7395031	Load Hold Kit - Boom	\$ _____
	Estimated Installation Time: 4 hrs.	
7395035	Load Moment Alarm Kit.....	\$ _____
	Estimated Installation Time: 1 hr.	
7382104	Long Arm Kit.....	\$ _____
	If installing on standard arm, must also install Counterweight Add-On Kit PN 7350483. Estimated Installation Time: 3 hrs.	
7173148	Mirror Kit.....	\$ _____
	Estimated Installation Time: 0.5 hr.	
7185281	Pin-On X-Change Kit.....	\$ _____
	Estimated Installation Time: 1 hr.	

E48 R2-Series Bobcat Compact Excavator

Part Number	Dealer Installed Accessories - Order From Parts	
7229098	Radio Kit - Bluetooth (Cab only).....	\$ _____
	Must also order speaker & antenna kit PN 7228595 if not already installed. Estimated Installation Time: 1 hr.	
6988434	Radio Kit (Cab only).....	\$ _____
	Must also order speaker & antenna kit PN 7228595 if not already installed. Estimated Installation Time: 1 hr.	
7420941	Rearview Camera Kit.....	\$ _____
	Rearview camera kit for the 5" Std Display and 7" Touch Display. Estimated Installation Time: 1 hr.	
7241205	Right Hand Boom Light Kit.....	\$ _____
	Estimated Installation Time: 1 hr.	
7343518	Seat Back Extension Kit - Cloth.....	\$ _____
	Estimated Installation Time: 0.5 hr.	
7343521	Seat Back Extension Kit - Vinyl.....	\$ _____
	Estimated Installation Time: 0.5 hr.	
7389930	Second Aux Kit - Extendable Arm.....	\$ _____
	Provides 12.0 GPM maximum flow. Estimated Installation Time: 4 hrs.	
7389929	Second Aux Kit - Long Arm.....	\$ _____
	Provides 12.0 GPM maximum flow. Estimated Installation Time: 4 hrs.	
7382106	Extendable Arm Kit.....	\$ _____
7389928	Second Aux Kit - Standard Arm	\$ _____
	Provides 12.0 GPM maximum flow. Estimated Installation Time: 4 hrs.	
7382105	Standard Arm Kit.....	\$ _____
	Estimated Installation Time: 4 hrs.	
7391013	Steel Track Kit.....	\$ _____
	Estimated Installation Time: 4 hrs.	
7172974	Strobe Light Kit.....	\$ _____
	Estimated Installation Time: 0.75 hr.	
7379838	Translator Literature Kit.....	\$ _____
	Estimated Installation Time: 0.5 hr.	
7205970	Travel Motion Alarm Kit.....	\$ _____
	Estimated Installation Time: 2 hrs.	
7303055	Window Access Kit.....	\$ _____
	Estimated Installation Time: 0.5 hr.	
7280215	Window Shade Kit (R-Series only).....	\$ _____
	Retractable window shade, covers top cab window. Estimated Installation Time: 2 hrs.	
7241225	Work Lights Kit, Cab.....	\$ _____
	Additional Halogen front work lights (2), and rear work light (1) for cab only. Mounts to front & rear cab pillars. Estimated Installation Time: 2 hrs.	
7413562	Work Lights LED Kit, Cab and Canopy.....	\$ _____
	Provides 2 front mounted and 1 rear mounted LED Lights. Estimated Installation Time: 2 hrs.	

E55 R2-Series Bobcat Compact Excavator



Standard Equipment

2yr Machine IQ Basics Subscription with 90-Day
Machine IQ Health & Security Free Trial
Auto-Idle
Auto-Shift, Two-Speed Travel
Auxiliary Hydraulics with Selectable Flow
- W/ Arm Mounted Flush Face Quick Couplers
Canopy
- Includes: Cup Holder, Retractable Seat Belt,
Vinyl Suspension Seat
- Roll Over Protective Structure (ROPS) – Meets
Requirements of ISO 12117-2: 2008
- Tip Over Protective Structure (TOPS) – Meets
Requirements of ISO 12117: 2000
- Falling Object Protective Structure (FOPS) – Meets
Requirements of ISO 10262
Control Console Locks
Control Pattern Selector Valve (ISO/STD)

Dozer Blade with Float
Fingertip Auxiliary Hydraulic Control
Fingertip Boom Swing Control
Horn
Hydraulic Joystick Controls
Keyless Start
LED Work Lights
Lift Eye
Rubber Tracks
Standard Arm
Spark Arrestor
Deluxe Instrument Panel
Turbocharged Diesel Engine, Tier 4, Non DPF
Vandalism Protection
X- Change™ Attachment Mounting System
Warranty: 2 years, or 2000 hours whichever occurs first
Minimal Tail Swing

Quick Specs

	E55 R2	
	Std Arm	Long Arm
Engine Model (Tier 4).....	Bobcat 1.8L	Bobcat 1.8L
Horsepower.....	49.7	49.7
Rated Speed-RPM.....	2200	2200
Auxiliary Hydraulics Flow.....	20.0 GPM	20.0 GPM
Travel Speed (Maximum).....	2.8 MPH	2.8 MPH
Operating Weight*.....	11,357 lbs.	11,876 lbs.
Shipping Weight.....	11,054 lbs.	11,573 lbs.
Cab Height.....	100.2"	100.2"
Width.....	77.2"	77.2"
Length, Transport.....	221.6"	221.6"
Dig Depth.....	11' 5"	12' 9"
Reach at Ground Level.....	19' 4"	20' 7"
Dump Height.....	13'	13' 11"
Arm Length.....	60.0"	75.8"
Boom Swing (Left).....	75°	75°
Boom Swing (Right).....	50°	50°
Arm Breakout Force.....	6987 lbf.	5962 lbf.
Tail Swing Overhang.....	0.6"	3.3"

*Operating Weight includes canopy, rubber tracks, applicable counterweight, standard bucket, and fluids full.

E55 R2-Series Bobcat Compact Excavator

Part Number	Description	REQUIRED - Bobcat Packages	SLP in US \$
-------------	-------------	----------------------------	--------------

ORDERING PATH:

- 1) **REQUIRED: SELECT ONE BOBCAT PACKAGE**
2) **OPTIONAL: SELECT INDIVIDUAL OPTIONS (NO PREMIUM ADDED)**

M3419-P11-C03	Canopy Plus Package	\$85,176
	Includes: Open Canopy, Deluxe Instrument Panel with Keyless Start, Travel Motion Alarm, Vinyl Suspension Seat	
M3419-P11-C11	Canopy Deluxe Package.....	\$87,773
	Includes: Open Canopy, 3yr Machine IQ Health & Security Subscription, Keyless Start, Bobcat 7" Touch Display with Radio and Bluetooth, Vinyl Suspension Seat, Travel Motion Alarm	
M3419-P11-C07	Cab Plus Package.....	\$93,722
	Includes: Enclosed Cab with HVAC, Deluxe Instrument Panel with Keyless Start, Cloth Suspension Seat, Travel Motion Alarm, Radio	
M3419-P11-C12	Cab Deluxe Package.....	\$97,207
	Includes: Enclosed Cab with Auto HVAC, 3yr Machine IQ Health & Security Subscription, Keyless Start, Bobcat 7" Touch Display with Radio and Bluetooth, Heated High Back Cloth Suspension Seat, Travel Motion Alarm	

Part Number	Description	OPTIONAL Selection - Factory Installed	SLP in US \$
-------------	-------------	--	--------------

CAN BE SELECTED WITH A BOBCAT PACKAGE (NO PREMIUM ADDED)

Arm

M3419-R03-C02	Arm Option - Long Arm.....	\$2,448
	Long Arm option includes max counterweight configuration, increasing operating weight by 519 lbs and tail swing by 2.9 inches. Additional bolt-on counterweight not compatible.	

Attachment Coupler

M3419-R06-C03	Hydraulic X-Change - Standard Arm.....	\$2,561
M3419-R06-C04	Hydraulic X-Change - Long Arm.....	\$2,561
M3419-R06-C10	Hydraulic Pin Grabber - Standard Arm, Canopy.....	\$5,759
	Machine ordered with hydraulic pin-grabber. Includes one pair of attachment pins. Must order attachment pin kit PN 46938829 from PARTS for each additional attachment. Compatible with 45mm attachment pins only.	
M3419-R06-C11	Hydraulic Pin Grabber - Long Arm, Canopy.....	\$5,759
	Machine ordered with hydraulic pin-grabber. Includes one pair of attachment pins. Must order attachment pin kit PN 46938829 from PARTS for each additional attachment. Compatible with 45mm attachment pins only.	
M3419-R06-C12	Hydraulic Pin Grabber - Standard Arm, Cab.....	\$5,759
	Machine ordered with hydraulic pin-grabber. Includes one pair of attachment pins. Must order attachment pin kit PN 46938829 from PARTS for each additional attachment. Compatible with 45mm attachment pins only.	
M3419-R06-C13	Hydraulic Pin Grabber - Long Arm, Cab.....	\$5,759
	Machine ordered with hydraulic pin-grabber. Includes one pair of attachment pins. Must order attachment pin kit PN 46938829 from PARTS for each additional attachment. Compatible with 45mm attachment pins only.	

E55 R2-Series Bobcat Compact Excavator

Part Number	Description	OPTIONAL Selection - Factory Installed	SLP in US \$
-------------	-------------	--	--------------

Blade

M3419-R12-C02 Hydraulic Angle Blade..... \$3,833

Clamp

M3419-R08-C31 Hydraulic Clamp - X-Change (Class IV) w/ Diverter Valve - Standard Arm..... \$4,847
For use with Mechanical X-Change or Hydraulic X-Change coupler. Includes arm mounted Diverter Valve and wrench.

M3419-R08-C15 Hydraulic Clamp - X-Change (Class IV) w/ Diverter Valve - Long Arm..... \$4,847
For use with Mechanical X-Change or Hydraulic X-Change coupler. Includes arm mounted Diverter Valve and wrench.

M3419-R08-C45 Hydraulic Clamp - Pin Grabber (Class IV) w/ Diverter Valve - Standard Arm..... \$4,847
For use with Hydraulic Pin Grabber coupler. Includes arm mounted Diverter Valve and wrench.

M3419-R08-C46 Hydraulic Clamp - Pin Grabber (Class IV) w/ Diverter Valve - Long Arm..... \$4,847
For use with Hydraulic Pin Grabber coupler. Includes arm mounted Diverter Valve and wrench.

Rearview Camera

ONLY AVAILABLE WITH THE CAB DELUXE PACKAGE

M3419-R28-C05 Rearview Camera..... \$576
Factory installed Rearview Camera. Compatible only with 7" Touch Display. Must Order Cab Deluxe Package.

Depth Check

ONLY AVAILABLE WITH THE CANOPY DELUXE OR CAB DELUXE PACKAGE

M3419-R60-C02 Depth Check - Standard Arm, Standard Blade..... \$4,340
Factory installed upgraded Depth Check for Standard Arm, Standard Blade excavator. Requires 7" Touch Display. Requires calibration at the dealership. Must Order Canopy Deluxe or Cab Deluxe Package with Hydraulic X-Change or Hydraulic Pin Grabber Attachment Coupler.

M3419-R60-C03 Depth Check - Standard Arm, Angle Blade..... \$4,340
Factory installed upgraded Depth Check for Standard Arm, Angle Blade excavator. Requires 7" Touch Display. Requires calibration at the dealership. Must Order Canopy Deluxe or Cab Deluxe Package with Hydraulic X-Change or Hydraulic Pin Grabber Attachment Coupler.

M3419-R60-C04 Depth Check - Long Arm, Standard Blade..... \$4,340
Factory installed upgraded Depth Check for Long Arm, Standard Blade excavator. Requires 7" Touch Display. Requires calibration at the dealership. Must Order Canopy Deluxe or Cab Deluxe Package with Hydraulic X-Change or Hydraulic Pin Grabber Attachment Coupler.

M3419-R60-C05 Depth Check - Long Arm, Angle Blade..... \$4,340
Factory installed upgraded Depth Check for Long Arm, Angle Blade excavator. Requires 7" Touch Display. Requires calibration at the dealership. Must Order Canopy Deluxe or Cab Deluxe Package with Hydraulic X-Change or Hydraulic Pin Grabber Attachment Coupler.

Part Number	Description	Dealer Installed Accessories - Order From Sales	SLP in US \$
-------------	-------------	---	--------------

7457286 LC510 Receiver..... \$1,156
Laser Receiver for use with Depth Check only. Mounting kit (7457287) must also be purchased.
Estimated Installation Time: 0.25 hrs. Compatible with 7" Touch Display and previous 5" Standard Display. Not compatible with Deluxe Display Panel.

E55 R2-Series Bobcat Compact Excavator

Part Number	Description	SLP in US \$
7457287	LC510 Magnetic Mounting Magnetic Mounting Kit for LC510 Laser Receiver.	\$152
7456563	LC510 Harness (ORDER FROM PARTS)..... Harness for LC510 laser receiver. Must be ordered with LC510 7457286, and LC510 Mounting 7457287.	\$ _____
7160486	Laser Receiver, BLR2 (For use with Depth Check)..... No longer available for order.	N/A
7531738	Topcon Laser Transmitter, Dual Slope- (For use with Depth Check)..... Dual Slope. Works with Trimble LC510 receiver	\$3,627
7531739	Topcon Elevating Tripod..... For use with Topcon Laser Transmitter	\$675
7488381	Front Polycarbonate Window Kit Polycarbonate window guard that mounts in front of the cab structure to restrict debris from contacting the cab's front glass window. Compatible with R2-Series E32-E55 canopy and cab, compatible with R1-Series E32, E35 canopy and cab.	\$1,985
46892445	Depth Check Kit (V2) - Standard Arm, Standard Blade..... Applies to standard arm models equipped with fixed blade. Applicable to machines with R2-Series 7" Touch Display ONLY. Please refer to Laser and 3D Equipment section of the Dealer Installed tab for optional Laser Receivers that are compatible with the Depth Check System.	\$4,312
46892447	Depth Check Kit (V2) - Standard Arm, Angle Blade..... Applies to standard arm models equipped with angle blade. Applicable to machines with R2-Series 7" Touch Display ONLY. Please refer to Laser and 3D Equipment section of the Dealer Installed tab for optional Laser Receivers that are compatible with the Depth Check System.	\$4,162
46892449	Depth Check Kit (V2) - Long Arm, Standard Blade..... Applies to long arm models equipped with fixed blade. Applicable to machines with R2-Series 7" Touch Display ONLY. Please refer to Laser and 3D Equipment section of the Dealer Installed tab for optional Laser Receivers that are compatible with the Depth Check System.	\$4,312
46892451	Depth Check Kit (V2) - Long Arm, Angle Blade..... Applies to long arm models equipped with angle blade. Applicable to machines with R2-Series 7" Touch Display ONLY. Please refer to Laser and 3D Equipment section of the Dealer Installed tab for optional Laser Receivers that are compatible with the Depth Check System.	\$4,162

Part Number	Description	SLP in US \$
9987580	Customer Machine IQ Health and Security Subscription - 1 Year..... Basics package features + geofence, curfew, email and in-portal notifications, utilization reporting.	\$200
9987581	Customer Machine IQ Health and Security Subscription - 2 Year..... Basics package features + geofence, curfew, email and in-portal notifications, utilization reporting.	\$400
9987582	Customer Machine IQ Health and Security Subscription - 3 Year..... Basics package features + geofence, curfew, email and in-portal notifications, utilization reporting.	\$600
9987583	Customer Machine IQ Health and Security Subscription - 4 Year..... Basics package features + geofence, curfew, email and in-portal notifications, utilization reporting.	\$800
9987584	Customer Machine IQ Health and Security Subscription - 5 Year..... Basics package features + geofence, curfew, email and in-portal notifications, utilization reporting.	\$1,000

E55 R2-Series Bobcat Compact Excavator

Part Number	Description	Dealer Installed Accessories - Order From Parts
----------------	-------------	---

To ensure having the correct Part Number for a Dealer Installed Accessory, obtain the excavator model and serial number and check with the Dealer Parts Department. For the most current Dealer Installed Accessories pricing, refer to BobQuote or Dealer Parts Department.

7102902	3" Seat Belt Kit.....	\$ _____
	Must also order installation instructions PN 6989413. Estimated Installation Time: 1 hr.	
7172554	Beacon Kit.....	\$ _____
	Estimated Installation Time: 1 hr.	
7354513	Bobcat Telematics-Machine IQ NA.....	\$ _____
7199213	Bolt-On Rubber Pad Kit – (E50, E60 R2-Series) (E45, E50, & E55 M-series) Only.....	\$ _____
	For use with steel tracks only. Includes 78 pads. Available only for S/N AG3G11113 & above (E45). Estimated Installation Time: 3 hrs.	
7336205	Cab Door Kit.....	\$ _____
	Estimated Installation Time: 1.5 hrs.	
7324003	Cab Kit.....	\$ _____
	Estimated Installation Time: 1.5 hrs.	
7391017	Canopy Kit.....	\$ _____
	Estimated Installation Time: 2 hrs.	
7393097	Case Drain Kit.....	\$ _____
	For use with Flail Mower attachment. Estimated Installation Time: 2 hrs.	
7378231	CI Coupler Kit (Common Interface).....	\$ _____
	Estimated Installation Time: 1 hr.	
7350483	Counterweight, Add-On Kit.....	\$ _____
	Required for conversion from standard arm to long or extendable arm for E42. Can be used on standard arm configuration for E50. Not compatible with long or extendable arm configurations for E50. Shipping weight = 500 lbs. Increases tail swing by 2.5". Estimated Installation Time: 1 hr.	
7304683	Deflector, Louver.....	\$ _____
	Provides additional protection of engine components and deflects air flow exiting below engine. Estimated Installation Time: 0.5 hr.	
7246898	Depth Check BLR2 Laser Mounting Kit.....	\$ _____
	Required if using BLR2 with Depth Check. Includes Magnetic Receiver Mount and Harness.	
7380855	PREVIOUS Depth Check Kit (Deluxe Display Only) - Long Arm Angle Blade	\$ _____
	Applies to long arm models equipped with angle blade. Applicable to machines with R2-Series 7" Touch Display, 5" Standard Display, and Deluxe Instrument Panel. (M-Series = Forward Mounted Deluxe Instrumentation panel only) Please refer to Laser and 3D Equipment section of the Dealer Installed tab for optional Laser Receivers that are compatible with the Depth Check System. Not Compatible with Standard Instrument Panel.	
7380853	PREVIOUS Depth Check Kit (Deluxe Display Only) - Long Arm Standard Blade	\$ _____
	Applies to long arm models equipped with fixed blade. Applicable to machines with R2-Series 7" Touch Display, 5" Standard Display, and Deluxe Instrument Panel. (M-Series = Forward Mounted Deluxe Instrumentation panel only) Please refer to Laser and 3D Equipment section of the Dealer Installed tab for optional Laser Receivers that are compatible with the Depth Check System. Not compatible with Standard Instrument Panel.	
7380859	PREVIOUS Depth Check Kit (Deluxe Display Only) - Standard Arm Angle Blade	\$ _____
	Applies to standard arm models equipped with angle blade. Applicable to machines with R2-Series 7" Touch Display, 5" Standard Display, and Deluxe Instrument Panel. (M-Series = Forward Mounted Deluxe Instrumentation panel only) Please refer to Laser and 3D Equipment section of the Dealer Installed tab for optional Laser Receivers that are compatible with the Depth Check System. Not Compatible with Standard Instrument Panel.	

E55 R2-Series Bobcat Compact Excavator

Part Number	Description	Dealer Installed Accessories - Order From Parts
7380857	PREVIOUS Depth Check Kit (Deluxe Display Only) - Standard Arm Standard Blade	\$ _____
	Applies to standard arm models equipped with fixed blade. Applicable to machines with R2-Series7" Touch Display, 5" Standard Display, and Deluxe Instrument Panel. (M-Series = Forward Mounted Deluxe Instrumentation panel only) Please refer to Laser and 3D Equipment section of the Dealer Installed tab for optional Laser Receivers that are compatible with the Depth Check System. Not compatible with Standard Instrument Panel.	
7391016	Direct to Tank Kit.....	\$ _____
	Estimated Installation Time: 1.5 hrs.	
7394826	Diverter Kit - Standard Arm	\$ _____
	Estimated Installation Time: 2 hrs.	
7394827	Diverter Kit - Long Arm	\$ _____
	Estimated Installation Time: 2 hrs.	
7372533	Engine Block Heater Kit - Bobcat Engine.....	\$ _____
	Estimated Installation Time: 0.25 hr.	
6904762	Excavator Operator Safety DVD.....	\$ _____
	Includes both English and Spanish versions on one DVD.	
6903186	Excavator Operator Training Kit.....	\$ _____
6900916	Excavator Service Safety Training Kit.....	\$ _____
7306976	Fire Extinguisher Kit.....	\$ _____
	Estimated Installation Time: 1 hr.	
7383344	Geith Hydraulic Pin Grabber Kit.....	\$ _____
	Estimated Installation Time: 6 hrs.	
7320485	Guard Kit - Front.....	\$ _____
	Front guard (metal screen) attaches to cab or canopy to provide additional operator protection - Level I FOGS. Estimated Installation Time: 1.5 hr.	
7231496	HEPA Filter Kit.....	\$ _____
	Estimated Installation Time: 0.5 hr.	
7444455	Hydraulic X-Change Kit.....	\$ _____
	Estimated Installation Time: 6 hrs.	
6693245	Keyed Ignition.....	\$ _____
	Estimated Installation Time: 1 hr.	
7408604	Load Hold Kit - Arm.....	\$ _____
	Estimated Installation Time: 4 hrs.	
7395031	Load Hold Kit - Boom	\$ _____
	Estimated Installation Time: 4 hrs.	
7395035	Load Moment Alarm Kit.....	\$ _____
	Estimated Installation Time: 1 hr.	
7381663	Long Arm Kit.....	\$ _____
	If installing on standard arm, must also install Counterweight Add-On Kit PN 7350483. Estimated Installation Time: 4 hrs.	
7173148	Mirror Kit.....	\$ _____
	Estimated Installation Time: 0.5 hr.	
7349578	Out Exhaust Kit.....	\$ _____
	Exhaust pipe angled outwards.	
7185281	Pin-On X-Change Kit.....	\$ _____
	Estimated Installation Time: 1 hr.	
7229098	Radio Kit - Bluetooth (Cab only).....	\$ _____
	Must also order speaker & antenna kit PN 7228595 if not already installed. Estimated Installation Time: 1 hr.	
6988434	Radio Kit (Cab only).....	\$ _____
	Must also order speaker & antenna kit PN 7228595 if not already installed. Estimated Installation Time: 1 hr.	

E55 R2-Series Bobcat Compact Excavator

Part Number	Description	Dealer Installed Accessories - Order From Parts
7420941	Rearview Camera Kit.....	\$ _____
	Rearview camera kit for the 5" Std Display and 7" Touch Display. Estimated Installation Time: 1 hr.	
7241205	Right Hand Boom Light Kit.....	\$ _____
	Estimated Installation Time: 1 hr.	
7343518	Seat Back Extension Kit - Cloth.....	\$ _____
	Estimated Installation Time: 0.5 hr.	
7343521	Seat Back Extension Kit - Vinyl.....	\$ _____
	Estimated Installation Time: 0.5 hr.	
7390014	Second Aux Kit - Standard Arm	\$ _____
	Provides 12.0 GPM maximum flow. Estimated Installation Time: 4 hrs.	
7390015	Second Aux Kit - Long Arm	\$ _____
	Provides 12.0 GPM maximum flow. Estimated Installation Time: 4 hrs.	
7391015	Segmented Track Kit.....	\$ _____
	Rubber over steel segmented tracks. Estimated Installation Time: 4 hrs.	
7381664	Standard Arm Kit.....	\$ _____
	Estimated Installation Time: 4 hrs.	
7391014	Steel Track Kit.....	\$ _____
	Estimated Installation Time: 4 hrs.	
7172974	Strobe Light Kit.....	\$ _____
7379839	Translator Literature Kit.....	\$ _____
7205970	Travel Motion Alarm Kit.....	\$ _____
	Estimated Installation Time: 2 hrs.	
7303055	Window Access Kit.....	\$ _____
	Estimated Installation Time: 0.5 hr.	
7280215	Window Shade Kit (R-Series only).....	\$ _____
	Retractable window shade, covers top cab window. Estimated Installation Time: 2 hrs.	
7241225	Work Lights Kit, Cab.....	\$ _____
	Additional Halogen front work lights (2), and rear work light (1) for cab only. Mounts to front & rear cab pillars. Estimated Installation Time: 2 hrs.	
7413562	Work Lights LED Kit, Cab and Canopy.....	\$ _____
	Provides 2 front mounted and 1 rear mounted LED Lights. Estimated Installation Time: 2 hrs.	

E60 R2-Series Bobcat Compact Excavator



Standard Equipment

2yr Machine IQ Basics Subscription with 90-Day Machine IQ Health & Security Free Trial	Dozer Blade with Float
Auto-Idle	Fingertip Auxiliary Hydraulic Control
Auto-Shift, Two-Speed Travel	Fingertip Boom Swing Control
Auxiliary Hydraulics with Selectable Flow	Horn
- W/ Arm Mounted Flush Face Quick Couplers	Hydraulic Joystick Controls
Canopy	Keyless Start
- Includes: Cup Holder, Retractable Seat Belt, Vinyl Suspension Seat	LED Work Lights
- Roll Over Protective Structure (ROPS) – Meets Requirements of ISO 12117-2: 2008	Lift Eye
- Tip Over Protective Structure (TOPS) – Meets Requirements of ISO 12117: 2000	Long Arm
- Falling Object Protective Structure (FOPS) – Meets Requirements of ISO 10262	Rubber Tracks
Control Console Locks	Spark Arrestor
Control Pattern Selector Valve (ISO/STD)	Deluxe Instrument Panel
	Turbocharged Diesel Engine, Tier 4, Non DPF
	Vandalism Protection
	X- Change™ Attachment Mounting System
	Warranty: 2 years, or 2000 hours whichever occurs first
	Conventional Tail Swing

Quick Specs

	E60 R2	
	<u>Long Arm</u>	<u>Ext Arm</u>
Engine Model (Tier 4).....	Bobcat 2.4L	Bobcat 2.4L
Horsepower.....	55.7	55.7
Rated Speed-RPM.....	2200	2200
Auxiliary Hydraulics Flow.....	20.0 GPM	20.0 GPM
Travel Speed (Maximum).....	2.8 MPH	2.8 MPH
Operating Weight*.....	12,315 lbs.	12,646 lbs.
Cab Height.....	100.1"	100.1"
Width.....	77.2"	77.2"
Length, Transport.....	218.3"	218.3"
Dig Depth.....	13' 1"	14' 9"
Reach at Ground Level.....	20' 6"	22' 2"
Dump Height.....	14' 3"	15' 3"
Arm Length.....	75.8"	96.0"
Boom Swing (Left).....	75°	75°
Boom Swing (Right).....	50°	50°
Bucket Breakout Force.....	10,261 lbf.	10,261 lbf.
Tail Swing Overhang**.....	11.1"	11.1"

*Operating Weight includes canopy, rubber tracks, applicable counterweight, standard bucket, fluids full and 165 lb. (75KG) operator.

**Does not include Add-On Counterweight (Add-On Ctw increases tail swing by 2.8" (71 mm))

E60 R2-Series Bobcat Compact Excavator

Part Number	Description	REQUIRED - Bobcat Packages	SLP in US \$
-------------	-------------	----------------------------	--------------

1) REQUIRED: SELECT ONE BOBCAT PACKAGE

2) OPTIONAL: SELECT INDIVIDUAL OPTIONS (NO PREMIUM ADDED)

M3321-P11-C03	Canopy Plus Package	\$94,376
	Includes: Open Canopy, Deluxe Instrument Panel with Keyless Start, Travel Motion Alarm, Vinyl Suspension Seat	
M3321-P11-C11	Canopy Deluxe Package.....	\$96,973
	Includes: Open Canopy, 3yr Machine IQ Health & Security Subscription, Keyless Start, Bobcat 7" Touch Display with Radio and Bluetooth, Vinyl Suspension Seat, Travel Motion Alarm	
M3321-P11-C07	Cab Plus Package.....	\$104,443
	Includes: Enclosed Cab with HVAC, Deluxe Instrument Panel with Keyless Start, Cloth Suspension Seat, Travel Motion Alarm, Radio	
M3321-P11-C12	Cab Deluxe Package.....	\$108,000
	Includes: Enclosed Cab with Auto HVAC, 3yr Machine IQ Health & Security Subscription, Keyless Start, Bobcat 7" Touch Display with Radio and Bluetooth, Heated High Back Cloth Suspension Seat, Travel Motion Alarm	

Part Number	Description	OPTIONAL Selection - Factory Installed	SLP in US \$
-------------	-------------	--	--------------

CAN BE SELECTED WITH A BOBCAT PACKAGE (NO PREMIUM ADDED)

Arm & Additional Counterweight

M3321-R03-C02	Long Arm.....	Standard
M3321-R03-C09	Long Arm + Additional bolt-on Counterweight.....	\$1,858
	Long Arm is standard equipment. Option is to include Additional Bolt-on Counterweight. Also available via AMP. Increases weight of machine by approximately 528 lbs. Increases tail swing by 2.8 in.	
M3321-R03-C03	Extendable Arm	\$8,146
	ONLY AVAILABLE WITH THE CAB DELUXE PACKAGE	
	Increases operating weight by 331 lbs.	
M3321-R03-C10	Extendable Arm + Additional bolt-on Counterweight.....	\$10,004
	ONLY AVAILABLE WITH THE CAB DELUXE PACKAGE	
	Increases weight of machine by 528 lbs. Increases tail swing by 2.8". Second Auxiliary Hydraulics (M3321-R07-C03, \$1712 SLP) will be automatically added.	

Attachment Coupler

M3321-R06-C04	Hydraulic X-Change - Long Arm.....	\$2,561
M3321-R06-C08	Hydraulic X-Change - Extendable Arm.....	\$2,561
M3321-R06-C11	Hydraulic Pin Grabber - Long Arm, Canopy.....	\$5,759
	Machine ordered with hydraulic pin-grabber. Includes one pair of attachment pins. Must order attachment pin kit PN 46938829 from PARTS for each additional attachment. Compatible with 45mm attachment pins only.	

E60 R2-Series Bobcat Compact Excavator

Part Number	Description	OPTIONAL Selection - Factory Installed	SLP in US \$
-------------	-------------	--	--------------

M3321-R06-C13	Hydraulic Pin Grabber - Long Arm, Cab.....		\$5,759
	Machine ordered with hydraulic pin-grabber. Includes one pair of attachment pins. Must order attachment pin kit PN 46938829 from PARTS for each additional attachment. Compatible with 45mm attachment pins only.		

Blade

M3321-R12-C02	Hydraulic Angle Blade.....		\$3,833
---------------	----------------------------	--	---------

Clamp

M3321-R08-C15	Hydraulic Clamp - X-Change (Class IV/V) w/ Diverter Valve - Long Arm.....		\$4,848
	For use with Mechanical X-Change or Hydraulic X-Change coupler. Includes arm mounted Diverter Valve and wrench.		
M3321-R08-C33	Hydraulic Clamp - X-Change (Class IV/V) - Ext Arm.....		\$3,289
	For use with Mechanical X-Change or Hydraulic X-Change coupler. Diverter Valve not available for Extendable Arm.		
M3321-R08-C46	Hydraulic Clamp - Pin Grabber (Class IV/V) w/ Diverter Valve - Long Arm.....		\$4,848
	For use with Hydraulic Pin Grabber coupler. Includes arm mounted Diverter Valve and wrench.		

Rearview Camera

ONLY AVAILABLE WITH THE CAB DELUXE PACKAGE

M3321-R28-C05	Rearview Camera.....		\$576
	Factory installed Rearview Camera. Compatible only with 7" Touch Display. Must Order Cab Deluxe Package.		

Depth Check

ONLY AVAILABLE WITH THE CANOPY DELUXE OR CAB DELUXE PACKAGE

M3321-R60-C04	Depth Check - Long Arm, Standard Blade.....		\$4,340
	Factory installed upgraded Depth Check for Long Arm, Standard Blade excavator. Requires 7" Touch Display. Requires calibration at the dealership. Must Order Canopy Deluxe or Cab Deluxe Package with Hydraulic X-Change or Hydraulic Pin Grabber Attachment Coupler.		
M3321-R60-C05	Depth Check - Long Arm, Angle Blade.....		\$4,340
	Factory installed upgraded Depth Check for Long Arm, Angle Blade excavator. Requires 7" Touch Display. Requires calibration at the dealership. Must Order Canopy Deluxe or Cab Deluxe Package with Hydraulic X-Change or Hydraulic Pin Grabber Attachment Coupler.		

Part Number	Description	Dealer Installed Accessories - Order From Sales	SLP in US \$
-------------	-------------	---	--------------

7457286	LC510 Receiver.....		\$1,156
	Laser Receiver for use with Depth Check only. Mounting kit (7457287) must also be purchased. Estimated Installation Time: 0.25 hrs. Compatible with 7" Touch Display and previous 5" Standard Display. Not compatible with Deluxe Display Panel.		
7457287	LC510 Magnetic Mounting		\$152
	Magnetic Mounting Kit for LC510 Laser Receiver.		
7456563	LC510 Harness (ORDER FROM PARTS).....		\$_____
	Harness for LC510 laser receiver. Must be ordered with LC510 7457286, and LC510 Mounting 7457287.		

E60 R2-Series Bobcat Compact Excavator

Part Number	Description	SLP in US \$
7160486	Laser Receiver, BLR2 (For use with Depth Check)..... No longer available for order.	N/A
7531738	Topcon Laser Transmitter, Dual Slope- (For use with Depth Check)..... Dual Slope. Works with Trimble LC510 receiver	\$3,627
7531739	Topcon Elevating Tripod..... For use with Topcon Laser Transmitter	\$675
7484401	Front Polycarbonate Window Kit Polycarbonate window guard that mounts in front of the cab structure to restrict debris from contacting the cab's front glass window. Compatible with R2-Series E60-E88 Cab ONLY and R1-Series E85 Cab ONLY.	\$1,990
46892449	Depth Check Kit (V2) - Long Arm, Standard Blade..... Applies to long arm models equipped with fixed blade. Applicable to machines with R2-Series 7" Touch Display ONLY. Please refer to Laser and 3D Equipment section of the Dealer Installed tab for optional Laser Receivers that are compatible with the Depth Check System.	\$4,312
46892451	Depth Check Kit (V2) - Long Arm, Angle Blade..... Applies to long arm models equipped with angle blade. Applicable to machines with R2-Series 7" Touch Display ONLY. Please refer to Laser and 3D Equipment section of the Dealer Installed tab for optional Laser Receivers that are compatible with the Depth Check System.	\$4,162

Part Number	Description	SLP in US \$
9987580	Customer Machine IQ Health and Security Subscription - 1 Year..... Basics package features + geofence, curfew, email and in-portal notifications, utilization reporting.	\$200
9987581	Customer Machine IQ Health and Security Subscription - 2 Year..... Basics package features + geofence, curfew, email and in-portal notifications, utilization reporting.	\$400
9987582	Customer Machine IQ Health and Security Subscription - 3 Year..... Basics package features + geofence, curfew, email and in-portal notifications, utilization reporting.	\$600
9987583	Customer Machine IQ Health and Security Subscription - 4 Year..... Basics package features + geofence, curfew, email and in-portal notifications, utilization reporting.	\$800
9987584	Customer Machine IQ Health and Security Subscription - 5 Year..... Basics package features + geofence, curfew, email and in-portal notifications, utilization reporting.	\$1,000

Part Number	Description
-------------	-------------

To ensure having the correct Part Number for a Dealer Installed Accessory, obtain the excavator model and serial number and check with the Dealer Parts Department. For the most current Dealer Installed Accessories pricing, refer to BobQuote or Dealer Parts Department.

7102902	3" Seat Belt Kit..... Must also order installation instructions PN 6989413. Estimated Installation Time: 1 hr.	\$ _____
7332349	Beacon Kit..... Estimated Installation Time: 0.75 hr.	\$ _____
7354513	Bobcat Telematics-Machine IQ NA.....	\$ _____
7199213	Bolt-On Rubber Pad Kit – (E50, E60 R2-Series) (E45, E50, & E55 M-series) Only..... For use with steel tracks only. Includes 78 pads. Available only for S/N AG3G11113 & above (E45). Estimated Installation Time: 3 hrs.	\$ _____
7393097	Case Drain Kit..... For use with Flail Mower attachment. Estimated Installation Time: 2 hrs.	\$ _____

E60 R2-Series Bobcat Compact Excavator

Part Number	Description	Dealer Installed Accessories - Order From Parts
7354580	Counterweight, Add-On Kit.....	\$ _____ Increases weight of machine by aprx 528 lbs. Increases tail swing by 2.8".
7343165	Deflector, Louver.....	\$ _____ Provides additional protection of engine components and deflects air flow exiting below engine. Estimated Installation Time: 0.5 hr.
7246898	Depth Check BLR2 Laser Mounting Kit.....	\$ _____ Required if using BLR2 with Depth Check. Includes Magnetic Receiver Mount and Harness. (Refer to "Order From Sales" for BLR2).
7380855	PREVIOUS Depth Check Kit (Deluxe Display Only) - Long Arm Angle Blade	\$ _____ Applies to long arm models equipped with angle blade. Applicable to machines with R2-Series 7" Touch Display, 5" Standard Display, and Deluxe Instrument Panel. (M-Series = Forward Mounted Deluxe Instrumentation panel only) Please refer to Laser and 3D Equipment section of the Dealer Installed tab for optional Laser Receivers that are compatible with the Depth Check System. Not Compatible with Standard Instrument Panel.
7380853	PREVIOUS Depth Check Kit (Deluxe Display Only) - Long Arm Standard Blade	\$ _____ Applies to long arm models equipped with fixed blade. Applicable to machines with R2-Series 7" Touch Display, 5" Standard Display, and Deluxe Instrument Panel. (M-Series = Forward Mounted Deluxe Instrumentation panel only) Please refer to Laser and 3D Equipment section of the Dealer Installed tab for optional Laser Receivers that are compatible with the Depth Check System. Not compatible with Standard Instrument Panel.
7391016	Direct to Tank Kit.....	\$ _____ Estimated Installation Time: 1.5 hrs.
7394827	Diverter Kit - Long Arm	\$ _____ Estimated Installation Time: 2 hrs.
7372533	Engine Block Heater Kit - Bobcat Engine.....	\$ _____ Estimated Installation Time: 0.25 hr.
7424900	Extendable Arm Kit.....	\$ _____ Estimated Installation Time: 4 hrs.
7306976	Fire Extinguisher Kit.....	\$ _____ Estimated Installation Time: 1 hr.
7400617	Geith Hydraulic Pin Grabber Kit.....	\$ _____ Estimated Installation Time: 6 hrs.
7410101	Guard Kit - Front.....	\$ _____ Front guard (metal screen) attaches to cab or canopy to provide additional operator protection. Estimated Installation Time: 0.5 hr.
7320462	Guard Kit - Top.....	\$ _____ Provides additional operator protection – Level II FOPS. Estimated Installation Time: 0.25 hr.
7231496	HEPA Filter Kit.....	\$ _____ Estimated Installation Time: 0.5 hr.
7444455	Hydraulic X-Change Kit.....	\$ _____ Estimated Installation Time: 6 hrs.
7461224	Hydraulic X-Change Kit - Extendable Arm.....	\$ _____
6693245	Keyed Ignition.....	\$ _____ Estimated Installation Time: 1 hr.
7408584	Load Hold Kit - Arm	\$ _____
7395031	Load Hold Kit - Boom	\$ _____ Estimated Installation Time: 4 hrs.
7395035	Load Moment Alarm Kit.....	\$ _____

E60 R2-Series Bobcat Compact Excavator

Part Number	Dealer Installed Accessories - Order From Parts	
7349578	Out Exhaust Kit.....	\$ _____
	Exhaust pipe angled outwards.	
	Estimated Installation Time: 4 hrs.	
7229098	Radio Kit - Bluetooth (Cab only).....	\$ _____
	Must also order speaker & antenna kit PN 7228595 if not already installed. Estimated Installation Time: 1 hr.	
6988434	Radio Kit (Cab only).....	\$ _____
	Must also order speaker & antenna kit PN 7228595 if not already installed. Estimated Installation Time: 1 hr.	
7420941	Rearview Camera Kit.....	\$ _____
	Rearview camera kit for the 5" Std Display and 7" Touch Display. Estimated Installation Time: 1 hr.	
7343518	Seat Back Extension Kit - Cloth.....	\$ _____
	Estimated Installation Time: 0.5 hr.	
7343521	Seat Back Extension Kit - Vinyl.....	\$ _____
	Estimated Installation Time: 0.5 hr.	
7424899	Second Aux Kit - Extendable Arm.....	\$ _____
	Provides 12.0 GPM maximum flow. Estimated Installation Time: 4 hrs.	
7415236	Second Aux Kit - Long Arm	\$ _____
	Provides 12.0 GPM maximum flow. Estimated Installation Time: 4 hrs.	
7391015	Segmented Track Kit.....	\$ _____
	Rubber over steel segmented tracks. Estimated Installation Time: 4 hrs.	
7391014	Steel Track Kit.....	\$ _____
	Estimated Installation Time: 4 hrs.	
7332351	Strobe Kit.....	\$ _____
	Estimated Installation Time: 0.5 hr.	
7415218	Translator Literature Kit.....	\$ _____
7205970	Travel Motion Alarm Kit.....	\$ _____
	Estimated Installation Time: 2 hrs.	
7416013	Window Access Kit.....	\$ _____
	Estimated Installation Time: 0.25 hr.	
7415332	Window Shade Kit.....	\$ _____
	Retractable window shade, covers top cab window. Estimated Installation Time: 0.5 hr.	
7413562	Work Lights LED Kit, Cab and Canopy.....	\$ _____
	Provides 2 front mounted and 1 rear mounted LED Lights. Estimated Installation Time: 2 hrs.	
7413564	Work Lights LED Kit - Rear, Cab and Canopy.....	\$ _____
	Provides 1 rear mounted LED Light. Estimated Installation Time: 0.5 hr.	

E88 R2-Series Bobcat Compact Excavator



Standard Equipment

2yr Machine IQ Basics Subscription with 90-Day Machine IQ Health & Security Free Trial	Fingertip Boom Swing Control
65.4 HP Turbocharged, Tier 4, Non DPF	Horn
Auto-Idle	Hydraulic Joystick Controls
Auto-Shift, Two Speed Travel	Integrated Bucket Link Lift Point
Auxiliary Hydraulics with Selectable Flow	Keyless Start
- W/ Arm Mounted Flush Face Quick Couplers	LED Work Lights
Cab, Enclosed with HVAC - ROPS/TOPS & Level 1 FOPS	- 2 front facing cab mounted, 1 under boom
- Includes: Radio Ready, Cup Holder,	Lift Eye
Retractable Seat Belt, Deluxe Cloth Suspension Seat	Long Arm
Control Console Locks	Mirrors - Left and Right Side
Control Pattern Selector Valve (ISO/STD)	Rubber Tracks
Conventional Tail Swing	Deluxe Instrument Panel
Dozer Blade - w/ Float	Turbocharged Diesel Engine, Tier 4, Non DPF
Engine/Hydraulic Monitor with Engine Idle	Pin-On Attachment Mounting System
Fingertip Auxiliary Hydraulics	Warranty: 2 years, or 2000 hours whichever occurs first

Quick Specs

	E88 R2 BMK Long Arm
Engine Model (Tier 4).....	Bobcat 2.4L
Horsepower.....	65.4
Rated speed-RPM.....	2100
Auxiliary Hydraulics Flow.....	25.1 GPM
Travel Speed (Maximum).....	2.6 MPH
Operating Weight.....	19,600 lbs.
Shipping Weight†.....	18,419 lbs.
Cab Height.....	100"
Width.....	86.6"
Length, Transport.....	249.6"
Dig Depth.....	15' 2"
Reach at Ground Level.....	23' 6"
Dump Height.....	16' 6"
Arm Length.....	85.8"
Boom Swing (Left).....	64°
Boom Swing (Right).....	61°
Arm Breakout Force.....	8,620 lbf.
Tail Swing Overhang.....	13"

†Shipping Weight does not include standard size bucket (24") and 165 lb. (75KG) operator.

E88 R2-Series Bobcat Compact Excavator

Part Number	Description	REQUIRED - Bobcat Packages	SLP in US \$
-------------	-------------	----------------------------	--------------

1) REQUIRED: SELECT ONE BOBCAT PACKAGE

2) OPTIONAL: SELECT INDIVIDUAL OPTIONS (NO PREMIUM ADDED)

M3327-P11-C07	Cab Plus Package.....	\$141,406
	Includes: Enclosed Cab with HVAC, Deluxe Instrument Panel with Keyless Start, Cloth Suspension Seat, Travel Motion Alarm, Radio	
M3327-P11-C12	Cab Deluxe Package.....	\$144,681
	MUST SELECT HYDRAULIC PIN-GRABBER READY OR HYDRAULIC PIN-GRABBER	
	Includes: Enclosed Cab with Auto HVAC, 3yr Machine IQ Health & Security Subscription, Keyless Start, Bobcat 7" Touch Display with Radio and Bluetooth, Heated High Back Cloth Suspension Seat, Travel Motion Alarm	

Part Number	Description	OPTIONAL Selection - Factory Installed	SLP in US \$
-------------	-------------	--	--------------

CAN BE SELECTED WITH A BOBCAT PACKAGE (NO PREMIUM ADDED)

Arm & Additional Counterweight

M3327-R03-C02	Long Arm	Standard
M3327-R03-C09	Long Arm + Add-on Counterweight.....	\$2,451
	Increases weight of machine by 897 lbs and increases tail swing by 4.7 inches.	

Attachment Coupler

M3327-R06-C19	Hydraulic Pin-Grabber Ready.....	\$2,657
	Includes control circuit and hydraulic supply system for activating Geith hydraulic pin grabber. Compatible with Geith hydraulic activated pin grabbers only. DOES NOT INCLUDE PIN GRABBER. To dealer install hydraulic pin grabber, order 7350524 from PARTS.	
M3327-R06-C17	Hydraulic Pin-Grabber	\$7,598
	ONLY AVAILABLE WITH CAB DELUXE PACKAGE	
	Machine ordered with hydraulic pin-grabber. Includes one pair of attachment pins. Must order attachment pin kit PN 7328360 from PARTS for each additional attachment. Compatible with 55mm attachment pins only.	

Blade

M3327-R12-C02	Hydraulic Angle Blade.....	\$7,056
---------------	----------------------------	---------

Clamp

M3327-R08-C15	Hydraulic Clamp (Class VI) w/ Diverter Valve - Long Arm.....	\$6,297
	Includes arm mounted Diverter Valve and wrench.	

SEE OTHER OPTIONS ON NEXT PAGE

E88 R2-Series Bobcat Compact Excavator

Part Number	Description	OPTIONAL Selection - Factory Installed	SLP in US \$
M3327-R13-C03	Load Holding Valves, w/ Alarm.....	\$3,527	
	ONLY AVAILABLE WITH CAB DELUXE PACKAGE		
	Includes load hold valve circuitry on boom cylinder and on arm cylinder. Includes audible alarm to alert operator of lifting conditions. Provides additional security when using work group to lift and place items.*Cannot be ordered with Steel or Segmented Rubber Tracks. Must order Add-on Counterweight, Hydraulic Clamp and Hydraulic Pin Grabber.		
M3327-R02-C02	Steel Tracks.....	\$2,887	
	ONLY AVAILABLE WITH CAB DELUXE PACKAGE		
	Must order Add-on Counterweight, Hydraulic Clamp and Hydraulic Pin Grabber. *Cannot be ordered with Load Holding Valves.		
M3327-R02-C04	Segmented Tracks.....	\$9,920	
	ONLY AVAILABLE WITH CAB DELUXE PACKAGE		
	Must order Add-on Counterweight, Hydraulic Clamp and Hydraulic Pin Grabber. *Cannot be ordered with Load Holding Valves.		

Part Number	Description	Dealer Installed Accessories - Order From Sales	SLP in US \$
7457286	LC510 Receiver.....	\$1,156	
	Laser Receiver for use with Depth Check only. Mounting kit (7457287) must also be purchased. Estimated Installation Time: 0.25 hrs. Compatible with 7" Touch Display and previous 5" Standard Display. Not compatible with Deluxe Display Panel.		
7457287	LC510 Magnetic Mounting	\$152	
	Magnetic Mounting Kit for LC510 Laser Receiver.		
7456563	LC510 Harness (ORDER FROM PARTS).....	\$_____	
	Harness for LC510 laser receiver. Must be ordered with LC510 7457286, and LC510 Mounting 7457287.		
7160486	Laser Receiver, BLR2 (For use with Depth Check).....	N/A	
	No longer available for order.		
7531738	Topcon Laser Transmitter, Dual Slope- (For use with Depth Check).....	\$3,627	
	Dual Slope. Works with Trimble LC510 receiver		
7531739	Topcon Elevating Tripod.....	\$675	
	For use with Topcon Laser Transmitter		
7484401	Front Polycarbonate Window Kit	\$1,990	
	Polycarbonate window guard that mounts in front of the cab structure to restrict debris from contacting the cab's front glass window. Compatible with R2-Series E60-E88 Cab ONLY and R1-Series E85 Cab ONLY.		
46892453	Depth Check Kit (V2) - Long Arm, Standard Blade.....	\$4,312	
	Applies to long arm models equipped with fixed blade. Applicable to machines with R2-Series 7" Touch Display ONLY. Please refer to Laser and 3D Equipment section of the Dealer Installed tab for optional Laser Receivers that are compatible with the Depth Check System.		
46892455	Depth Check Kit (V2) - Long Arm, Angle Blade.....	\$4,162	
	Applies to long arm models equipped with angle blade. Applicable to machines with R2-Series 7" Touch Display ONLY. Please refer to Laser and 3D Equipment section of the Dealer Installed tab for optional Laser Receivers that are compatible with the Depth Check System.		

E88 R2-Series Bobcat Compact Excavator

Part Number	Customer Machine IQ Health and Security Subscriptions	SLP in US \$
9987580	Customer Machine IQ Health and Security Subscription - 1 Year..... Basics package features + geofence, curfew, email and in-portal notifications, utilization reporting.	\$200
9987581	Customer Machine IQ Health and Security Subscription - 2 Year..... Basics package features + geofence, curfew, email and in-portal notifications, utilization reporting.	\$400
9987582	Customer Machine IQ Health and Security Subscription - 3 Year..... Basics package features + geofence, curfew, email and in-portal notifications, utilization reporting.	\$600
9987583	Customer Machine IQ Health and Security Subscription - 4 Year..... Basics package features + geofence, curfew, email and in-portal notifications, utilization reporting.	\$800
9987584	Customer Machine IQ Health and Security Subscription - 5 Year..... Basics package features + geofence, curfew, email and in-portal notifications, utilization reporting.	\$1,000

Part Number	Dealer Installed Accessories - Order From Parts
-------------	---

To ensure having the correct Part Number for a Dealer Installed Accessory, obtain the excavator model and serial number and check with the Dealer Parts Department. For the most current Dealer Installed Accessories pricing, refer to BobQuote or Dealer Parts Department.

UNLESS OTHERWISE NOTED, Dealer Installed Accessories Apply Only to R2-Series E88

7102902	3" Seat Belt Kit..... Must also order installation instructions PN 6989413. Estimated Installation Time: 1 hr.	\$ _____
7332349	Beacon Kit..... Estimated Installation Time: 0.75 hr.	\$ _____
7317785	Case Drain Kit..... For use with Flail Mower attachment. Estimated Installation Time: 1.5 hrs.	\$ _____
7365046	Counterweight Add On..... Increases Operating Weight by aprx 897 lb. Increases tail swing overhang to 18". Estimated Installation Time: 1 hr.	\$ _____
7343165	Deflector, Louver..... Provides additional protection of engine components and deflects air flow exiting below engine. Estimated Installation Time: 0.5 hr.	\$ _____
7246898	Depth Check BLR2 Laser Mounting Kit..... Required if using BLR2 with Depth Check. Includes Magnetic Receiver Mount and Harness. (Refer to "Order From Sales" for BLR2).	\$ _____
7380855	PREVIOUS Depth Check Kit (Deluxe Display Only) - Long Arm Angle Blade Applies to long arm models equipped with angle blade. Applicable to machines with R2-Series 7" Touch Display, 5" Standard Display, and Deluxe Instrument Panel. (M-Series = Forward Mounted Deluxe Instrumentation panel only) Please refer to Laser and 3D Equipment section of the Dealer Installed tab for optional Laser Receivers that are compatible with the Depth Check System. Not Compatible with Standard Instrument Panel.	\$ _____
7380853	PREVIOUS Depth Check Kit (Deluxe Display Only) - Long Arm Standard Blade Applies to long arm models equipped with fixed blade. Applicable to machines with R2-Series 7" Touch Display, 5" Standard Display, and Deluxe Instrument Panel. (M-Series = Forward Mounted Deluxe Instrumentation panel only) Please refer to Laser and 3D Equipment section of the Dealer Installed tab for optional Laser Receivers that are compatible with the Depth Check System. Not compatible with Standard Instrument Panel.	\$ _____
7238275	Direct to Tank Kit..... Reduces back pressure on auxiliary return line. Estimated Installation Time: 1.5 hrs.	\$ _____
7429623	Diverter Kit - Long Arm Estimated Installation Time: 2 hrs.	\$ _____

E88 R2-Series Bobcat Compact Excavator

Part Number	Description	Dealer Installed Accessories - Order From Parts
7372533	Engine Block Heater Kit - Bobcat Engine.....	\$ _____
	Estimated Installation Time: 0.25 hr.	
6904762	Excavator Operator Safety DVD.....	\$ _____
	Includes both English and Spanish versions on one DVD.	
6903186	Excavator Operator Training Kit.....	\$ _____
6900916	Excavator Service Safety Training Kit.....	\$ _____
7306976	Fire Extinguisher Kit.....	\$ _____
	Estimated Installation Time: 1 hr.	
7350524	Geith Hydraulic Coupler Kit.....	\$ _____
	Estimated Installation Time: 6 hrs.	
7410101	Guard Kit - Front.....	\$ _____
	Front guard (metal screen) attaches to cab or canopy to provide additional operator protection.	
	Estimated Installation Time: 0.5 hr.	
7320462	Guard Kit - Top.....	\$ _____
	Provides additional operator protection – Level II FOPS. Estimated Installation Time: 0.25 hr.	
7231496	HEPA Filter Kit.....	\$ _____
	Estimated Installation Time: 0.5 hr.	
7378719	Indicator Fuel Filter Kit.....	\$ _____
	Estimated Installation Time: 1 hr.	
7368509	Load Hold Kit - Arm	\$ _____
	Estimated Installation Time: 4 hrs.	
7435760	Load Hold Kit - Boom	\$ _____
	Estimated Installation Time: 4 hrs.	
7439886	Long Arm Diverter Valve Kit.....	\$ _____
	Estimated Installation Time: 2 hrs.	
7392973	Premium Lights Kit.....	\$ _____
	Premium, 1800 lumen (per light) LED Hella Light. (Qty. 3) Provides 2 front facing cab mounted, 1 under boom work lights. Estimated Installation Time: 2 hrs.	
7439859	Premium Rear Light Kit.....	\$ _____
	Premium, 1800 lumen LED Hella Light. (Qty. 1) Provides 1 rear facing, rear mounted cab work light. Estimated Installation Time: 0.5 hr.	
6988434	Radio Kit (Cab only).....	\$ _____
	Must also order speaker & antenna kit PN 7228595 if not already installed. Estimated Installation Time: 1 hr.	
7420941	Rearview Camera Kit.....	\$ _____
	Rearview camera kit for the 5" Std Display and 7" Touch Display. Estimated Installation Time: 1 hr.	
7343518	Seat Back Extension Kit - Cloth.....	\$ _____
	Estimated Installation Time: 0.5 hr.	
7368508	Second Aux Kit.....	\$ _____
	Provides 16.4 GPM maximum flow. Estimated Installation Time: 4 hrs.	
7332351	Strobe Kit.....	\$ _____
	Estimated Installation Time: 0.5 hr.	
7338130	Travel Motion Alarm Kit.....	\$ _____
	Estimated Installation Time: 4 hrs.	
7416013	Window Access Kit.....	\$ _____
	Estimated Installation Time: 0.25 hr.	
7415332	Window Shade Kit.....	\$ _____
	Retractable window shade, covers top cab window. Estimated Installation Time: 0.5 hr.	
7413564	Work Lights LED Kit - Rear, Cab and Canopy.....	\$ _____
	Provides 1 rear mounted LED Light. Estimated Installation Time: 0.5 hr.	