

BOBCAT COMPANY PRICE PAGES

NA Excavators



Please note the following when using Bobcat Price Pages:

- All prices are shown in U.S. dollars.
- Check BobcatNET Pricing Homepage for current Canadian exchange rate.
- For current Dealer Installed Accessories pricing, reference BobQuote or Dealer Parts Department.
- Prices and specifications are subject to change without notice.

THE FOLLOWING UPDATES HAVE BEEN MADE TO THIS DOCUMENT:

Date	Description of Change
7/1/2023	Effective Saturday, July 1, 2023 Bobcat Company has adjusted the SLP of power units and options. New option packages have been rolled out.
1/1/2024	No adjustments.
7/1/2024	Effective Monday, July 1, 2024 Bobcat Company has adjusted the SLP of power units and options.
1/1/2025	Effective Wednesday, January 1, 2025 Bobcat Company has adjusted the SLP of power units and options.
2/24/2025	Effective Monday, February 24, 2025 Bobcat Company launched new Large Excavator models (E220 and E245) and adjusted the SLP of power units and options.
1/1/2026	Effective Thursday, January 1, 2026 Bobcat Company has adjusted the SLP of power units and options.

*Certain Specification(s) are based on engineering calculations and are not actual measurements.

*Specification(s) are provided for comparison purposes only and are subject to change without notice.

*Specifications(s) for your individual Bobcat equipment will vary based on normal variations in design, manufacturing, operating conditions, and other factors.

E145

Bobcat Large Excavator



Standard Equipment

2yr Machine IQ Basics Subscription with 90-Day Machine IQ Health & Security Free Trial	Hydraulic Joystick Controls
3.0m Long Arm	Motion Alarm
Auto Shut-off	Pin-On Attachment Mounting System
Auxiliary Hydraulics with Selectable Flow	Power Boost
Battery Disconnect	Power Modes: Power+, Power, Standard, Economy
Cab, Enclosed with Auto HVAC - ROPS	Work Modes: One Way, Two Way, Lift, Dig
- Includes: Adjustable Arm Rests, Cup Holder, Heated Air	Self-Diagnostics System
Suspension Seat, Radio (DAB) with Bluetooth Connectivity and	Smart Key
USB, Retractable Seat Belt	Smart Power Control (SPC)
Camera: Around View Monitoring	Steel Tracks - 600 mm Triple Grouser
Control Lock-Out, disabling all machine functionality	Turbocharged Diesel, Tier 4, Non DPF
Control Pattern Selector Valve (ISO/STD)	Two Way Piping with Pedal and Fingertip Control
Display, 8" Touch Screen with Jog Shuttle	USB Charger Port
- Password protection	Vandalism Protection (Locking Panels & Fuel Cap)
Emergency Stop Switch	Warranty: 3 years or 5000 hours, whichever occurs first
Engine/Hydraulic Monitor with Shutdown	Water Separator with Fuel Heater
Engine Restart Prevention System	Work Lights LED: Boom (2), Front (1), LH Side (1), RH
Fingertip Auxiliary Hydraulic Control	Side (1) and Rear (1)
Foot Pedal Attachment Control	12 Volt Power Port
Horn (joystick mounted)	24 Volt Power Port

Quick Specs

	<u>E145</u>
Engine Model (Tier 4).....	Bobcat V2 3.4L
Horsepower.....	115
Main System Hydraulic Flow.....	60.2 GPM
Travel Speed (Maximum).....	2.9 MPH
Operating Weight*.....	34,946 lbs.
Cab Height.....	9' 5"
Boom Height.....	10' 1"
Width.....	8' 6"
Length, Transport.....	26' 3"
Dig Depth.....	19' 7"
Reach at Ground Level.....	28'
Dump Height.....	23' 3"
Arm Length.....	9' 10"
Bucket Breakout Force.....	24,471 lbf.
Arm Breakout Force.....	13,228 lbf.
Tail Swing Overhang.....	9"

E145

Bobcat Large Excavator

Part Number	Description	Large Excavator	SLP in US \$
-------------	-------------	-----------------	--------------

M3331	E145 Excavator.....		\$206,572
-------	---------------------	--	-----------

Part Number	Description	Individual Factory Options	SLP in US \$
-------------	-------------	----------------------------	--------------

M3331-R01-C02	Dozer Blade.....		\$10,678
	Increases operating weight 1638 lbs.		

M3331-R02-C02	Segmented Rubber Tracks.....		\$15,121
	500mm track width. Decreases operating weight by 662 lbs.		

M3331-R03-C02	Hydraulic Activated Pin-Grabber Attachment Quick Coupler.....		\$8,950
	Increases operating weight 460 lbs.		

M3331-R04-C02	Hydraulic Clamp, 24" Bucket, Pin-on Attachment.....		\$10,084
	For use with 24" Bucket and Pin-on Attachment Interface.		

M3331-R04-C03	Hydraulic Clamp, 36" Bucket, Pin-on Attachment.....		\$10,084
	For use with 36" Bucket and Pin-on Attachment Interface.		

M3331-R04-C04	Hydraulic Clamp, 42" Bucket, Pin-on Attachment.....		\$10,084
	For use with 42" Bucket and Pin-on Attachment Interface.		

M3331-R04-C05	Hydraulic Clamp, 24" Bucket, Hydraulic Pin-Grabber.....		\$10,084
	For use with 24" Bucket and Hydraulic Pin-Grabber.		

M3331-R04-C06	Hydraulic Clamp, 36" Bucket, Hydraulic Pin-Grabber.....		\$10,084
	For use with 36" Bucket and Hydraulic Pin-Grabber.		

M3331-R04-C07	Hydraulic Clamp, 42" Bucket, Hydraulic Pin-Grabber.....		\$10,084
	For use with 42" Bucket and Hydraulic Pin-Grabber.		

M3331-R04-C08	Pro-Link Clamp, 24" Bucket, Hydraulic Pin-Grabber.....		\$13,045
	For use with 24" Bucket and Hydraulic Pin-Grabber.		

M3331-R04-C09	Pro-Link Clamp, 36" Bucket, Hydraulic Pin-Grabber.....		\$13,045
	For use with 36" Bucket and Hydraulic Pin-Grabber.		

M3331-R04-C10	Pro-Link Clamp, 42" Bucket, Hydraulic Pin-Grabber.....		\$13,045
	For use with 42" Bucket and Hydraulic Pin-Grabber.		

M3331-A01-C01	24" Trenching Bucket.....		\$4,653
	Bucket Capacity: 0.42 CU. YD.		

M3331-A01-C02	36" Trenching Bucket.....		\$5,619
	Bucket Capacity: 0.71 CU. YD.		

M3331-A01-C03	42" Trenching Bucket.....		\$6,229
	Bucket Capacity: 0.85 CU. YD.		

M3331-A01-C04	60" Grading Bucket.....		\$6,482
	Bucket Capacity: 1.39 CU. YD.		

Part Number	Description	Customer Machine IQ Health and Security Subscriptions	SLP in US \$
-------------	-------------	---	--------------

9987580	Customer Machine IQ Health and Security Subscription - 1 Year.....		\$200
	Basics package features + geofence, curfew, email and in-portal notifications, utilization reporting.		

9987581	Customer Machine IQ Health and Security Subscription - 2 Year.....		\$400
	Basics package features + geofence, curfew, email and in-portal notifications, utilization reporting.		

9987582	Customer Machine IQ Health and Security Subscription - 3 Year.....		\$600
	Basics package features + geofence, curfew, email and in-portal notifications, utilization reporting.		

9987583	Customer Machine IQ Health and Security Subscription - 4 Year.....		\$800
	Basics package features + geofence, curfew, email and in-portal notifications, utilization reporting.		

E145

Bobcat Large Excavator

Part	Dealer Installed Accessories - Order From Parts
------	---

7503187	FOPS Level 2 Guard Kit.....	\$ _____
	Provides additional operator protection - Level II FOPS. Estimated Installation Time: 2 hrs.	
7503183	Lower Window Guard Kit.....	\$ _____
	Lower guard (metal screen) attaches to front, lower half of cab to provide additional operator	
7503185	Front Window Guard Kit.....	\$ _____
	Front guard (metal screen) attaches to cab to provide additional operator protection. Estimated	
7399360	Rain Shield Kit.....	\$ _____
	Estimated Installation Time: 0.5 hr.	
7503672	Rotating Beacon Kit.....	\$ _____
	Top of cab mounted, rotating beacon. Estimated Installation Time: 1 hr	
7397822	Pin Bucket Kit (Soft Pin).....	\$ _____
7475297	Translator Literature Kit.....	\$ _____
7503179	Working Lights 6 LED Lamp Kit.....	\$ _____
	6 additional cab mounted LED Lights, 4 front facing, 2 rear facing	
7503181	Working Lights 6 LED Lamp Kit for Top Guard Equipped.....	\$ _____
	For use with FOPS Level 2 Guard Kit.. 6 additional cab mounted LED Lights, 4 front facing, 2 rear facing. DOES NOT INCLUDE FOPS LEVEL 2 KIT	

E165 Bobcat Large Excavator



Standard Equipment

2yr Machine IQ Basics Subscription with 90-Day Machine IQ Health & Security Free Trial	Horn (joystick mounted)
Auto-Idle	Hydraulic Joystick Controls
Auto Shift, 2 Speed Travel	Mirrors, Left, and Right
Auto Shutoff	Pin-On Attachment Mounting System
Auxiliary Hydraulics with Selectable Flow	Hydraulic Pin Grabber Quick Coupler Ready
Battery Disconnect	Power Boost
Cab, Includes: Adjustable Arm Rests, Cup Holder, Heated Air	Power Modes: Power+, Power, Standard, Economy
- Suspension Seat, AM/FM Stereo with CD Player & MP3 Port,	Work Modes: Breaker, Shear, Lift, Dig
Retractable Seat Belt	Self-Diagnostics System
Camera: Rear and Side	Smart Power Control (SPC)
Control Lock-Out, disabling all machine functionality	Steel Tracks
Control Pattern Selector Valve (ISO/STD)	Travel Motion & Swing Alarm
Display, 8" Touch Screen with Jog Shuttle	Turbocharged Diesel, Tier 4, Non DPF
- Password protected	Vandalism Protection (Locking Panels & Fuel Cap)
Emergency Stop Switch	Vandalism Protection (Locking Panels & Fuel Cap)
Engine/Hydraulic Monitor with Shutdown	Warranty: 3 years or 5000 hours, whichever occurs first
Engine Restart Prevention System	Work Lights: Boom (2), House (1), and Rear (1)
Fingertip Auxiliary Hydraulic Control	12 Volt Power Port

Quick Specs

	E165
Engine Model (Tier 4).....	Perkins 1204F
Horsepower.....	131
Main System Hydraulic Flow.....	80.4 GPM
Travel Speed (Maximum).....	3.1 MPH
Operating Weight*.....	38,376 lbs.
Cab Height.....	9' 7"
Boom Height.....	10'
Handrail Height.....	10' 3"
Width.....	8' 6"
Length, Transport.....	27'
Dig Depth.....	20'
Reach at Ground Level.....	28' 10"
Dump Height.....	21' 4"
Arm Length.....	8' 2"
Bucket Breakout Force.....	25,794 lbf.
Arm Breakout Force.....	18,077 lbf.
Tail Swing Overhang.....	36"

*Operating Weight includes canopy, rubber tracks, applicable counterweight, standard bucket, fluids full and 165 lb. (75KG) operator.

E165

Bobcat Large Excavator

Part Number	Description	Large Excavator	SLP in US \$
-------------	-------------	-----------------	--------------

M3332	E165 Excavator.....		\$192,224
-------	---------------------	--	-----------

Part Number	Description	Individual Factory Options	SLP in US \$
-------------	-------------	----------------------------	--------------

M3332-R03-C02	Hydraulic Activated Pin Grabber Attachment Quick Coupler.....		\$9,148
	Increases operating weight 787 lbs.		
M3332-R04-C03	Hydraulic Clamp, for 36"/42" Pin On Bucket		\$10,701
	For use with 36"/42" Bucket and Pin-on Attachment Interface.		
M3332-R04-C02	Hydraulic Clamp, for 36"/42" Bucket and Hydraulic Pin Grabber.....		\$10,701
	For use with 36"/42" Bucket and Hydraulic Pin-Grabber.		
M3332-R04-C04	Pro-Link Clamp, for 36"/42" Bucket and Hydraulic Pin Grabber.....		\$13,092
	For use with 36"/42" Bucket and Hydraulic Pin-Grabber.		
M3332-A01-C02	36" Trenching Bucket.....		\$5,770
	Bucket Capacity: 0.80 CU. YD.		
M3332-A01-C03	42" Trenching Bucket.....		\$6,445
	Bucket Capacity: 0.96 CU. YD.		
M3332-A01-C05	48" Trenching Bucket.....		\$7,064
	Bucket Capacity: 1.64 CU. YD.		
M3332-A01-C04	60" Ditching Bucket.....		\$7,597
	Bucket Capacity: 1.13 CU. YD.		

Part Number	Description	Customer Machine IQ Health and Security Subscriptions	SLP in US \$
-------------	-------------	---	--------------

9987580	Customer Machine IQ Health and Security Subscription - 1 Year.....		\$200
	Basics package features + geofence, curfew, email and in-portal notifications, utilization		
9987581	Customer Machine IQ Health and Security Subscription - 2 Year.....		\$400
	Basics package features + geofence, curfew, email and in-portal notifications, utilization		
9987582	Customer Machine IQ Health and Security Subscription - 3 Year.....		\$600
	Basics package features + geofence, curfew, email and in-portal notifications, utilization		
9987583	Customer Machine IQ Health and Security Subscription - 4 Year.....		\$800
	Basics package features + geofence, curfew, email and in-portal notifications, utilization		
9987584	Customer Machine IQ Health and Security Subscription - 5 Year.....		\$1,000
	Basics package features + geofence, curfew, email and in-portal notifications, utilization		

E165

Bobcat Large Excavator

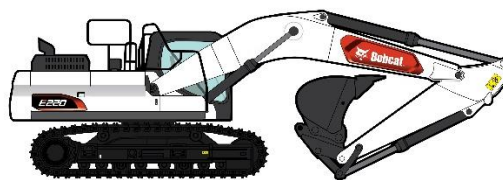
Part Number	Description	Dealer Installed Accessories - Order From Parts
-------------	-------------	---

To ensure having the correct Part Number for a Dealer Installed Accessory, obtain the excavator model and serial number and check with the Dealer Parts Department. For the most current Dealer Installed Accessories pricing, refer to BobQuote or Dealer Parts Department.

7419310	Beacon Kit - 2 Lamp.....	\$_____
	Estimated Installation Time: 1 hr.	
7419316	Beacon Kit - 2 Lamp, Guard Mount.....	\$_____
	Estimated Installation Time: 1 hr.	
7419312	Beacon Kit - 6 Lamp, Bracket.....	\$_____
	Estimated Installation Time: 1 hr.	
7419252	Engine Coolant Heater Kit.....	\$_____
	Estimated Installation Time: 8 hrs.	
7419270	Fuel Filter with Heater Kit.....	\$_____
	Estimated Installation Time: 1 hr.	
7419299	Guard Kit - Front.....	\$_____
	Front guard (metal screen) attaches to cab to provide additional operator protection. Estimated Installation Time: 1 hr.	
7419296	Guard Kit - Lower.....	\$_____
	Lower guard (metal screen) attaches to front, lower half of cab to provide additional operator protection. Estimated Installation Time: 1 hr.	
7419302	Guard Kit - Top.....	\$_____
	Provides additional operator protection – Level II FOPS. Estimated Installation Time: 2 hrs.	
7433703	Rain Shield Kit.....	\$_____
	Estimated Installation Time: 0.5 hr.	
7433341	Rotating Attachment Kit.....	\$_____
	Estimated Installation Time: 6 hrs.	
7407617	Translator Literature Kit.....	\$_____
7419273	Two Way Piping Kit with Filter.....	\$_____
	Estimated Installation Time: 1 hr.	
7419307	Work Lights Kit - 6 Lamp.....	\$_____
	Additional halogen work lights (6), 4 front mounted and 2 rear mounted to top of cab. Estimated Installation Time: 1 hr.	
7419309	Work Lights Kit - 6 Lamp, Guard Mount.....	\$_____
	Additional halogen work lights (6), 4 front mounted and 2 rear mounted to top (FOPS) guard kit. Estimated Installation Time: 1 hr.	
7419305	Work Lights Kit – Front.....	\$_____
	Additional halogen work lights (2), mount to top front corners of cab. Estimated Installation Time: 1 hr.	
7419308	Work Lights Kit - Front, Guard Mount.....	\$_____
	Additional halogen work lights (2), mount to front of top (FOPS) guard kit. Estimated Installation Time: 1 hr.	

E220

Bobcat Large Excavator



Standard Equipment

2yr Machine IQ Basics Subscription with 90-Day Machine IQ Health & Security Free Trial	Hydraulic Joystick Controls
2.9m Long Arm	Motion Alarm
Auto Shut-off	Pin-On Attachment Mounting System
Auxiliary Hydraulics with Selectable Flow	Power Boost
Battery Disconnect	Power Modes: Power+, Power, Standard, Economy
Cab, Enclosed with Auto HVAC - ROPS	Work Modes: One Way, Two Way, Lift, Dig
- Includes: Adjustable Arm Rests, Cup Holder, Heated Air	Self-Diagnostics System
Suspension Seat, Radio (DAB) with Bluetooth Connectivity and	Smart Key
USB, Retractable Seat Belt	Smart Power Control (SPC)
Camera: Side and Rear View Monitoring	Steel Tracks - 800 mm Triple Grouser
Control Lock-Out, disabling all machine functionality	Turbocharged Diesel, Tier 4, Non DPF
Control Pattern Selector Valve (ISO/STD)	Two Way Piping with Pedal and Fingertip Control
Display, 8" Touch Screen with Jog Shuttle	USB Charger Port
- Password protection	Vandalism Protection (Locking Panels & Fuel Cap)
Emergency Stop Switch	Warranty: 3 years or 5000 hours, whichever occurs first
Engine/Hydraulic Monitor with Shutdown	Water Separator with Fuel Heater
Engine Restart Prevention System	Work Lights LED: Boom (2), Front (1), LH Side (1), RH
Fingertip Auxiliary Hydraulic Control	Side (1) and Rear (1)
Foot Pedal Attachment Control	12 Volt Power Port
Horn (joystick mounted)	24 Volt Power Port

Quick Specs

	<u>E220</u>
Engine Model (Tier 4).....	Bobcat 5.9L
Horsepower.....	174
Main System Hydraulic Flow.....	111.2 GPM
Travel Speed (Maximum).....	3.4 mph
Operating Weight*.....	52,738 lbs.
Cab Height.....	9' 9"
Boom Height.....	9' 10"
Handrail Height.....	10' 5"
Width.....	10' 6"
Length, Transport.....	31' 5"
Dig Depth.....	21' 7"
Reach at Ground Level.....	31' 9"
Dump Height.....	22' 4"
Arm Length.....	9' 6"
Bucket Breakout Force.....	35,464 lbf.
Arm Breakout Force.....	25,402 lbf.
Tail Swing Overhang.....	51.7"

E220

Bobcat Large Excavator

Part Number	Description	Large Excavator	SLP in US \$
-------------	-------------	-----------------	--------------

M3334	E220 Excavator.....		\$246,876
-------	---------------------	--	-----------

Part Number	Description	Individual Factory Options	SLP in US \$
-------------	-------------	----------------------------	--------------

M3334-R03-C02	Hydraulic Activated Pin-Grabber Attachment Quick Coupler.....		\$10,338
	Increases operating weight 830 lbs.		
M3334-R04-C01	Hydraulic Clamp, 36" Bucket, Hydraulic Pin-Grabber.....		\$13,656
	For use with 36" Bucket and Hydraulic Pin-Grabber.		
M3334-R04-C02	Hydraulic Clamp, 36" Bucket, Pin-on Attachment.....		\$13,610
	For use with 36" Bucket and Pin-on Attachment Interface.		
M3334-R04-C03	Pro-Link Clamp, 36" Bucket, Hydraulic Pin-Grabber.....		\$16,764
	For use with 36" Bucket and Hydraulic Pin-Grabber.		
M3334-R04-C04	Hydraulic Clamp, 42"/48" Bucket, Hydraulic Pin-Grabber.....		\$14,505
	For use with 42"/48" Bucket and Hydraulic Pin-Grabber.		
M3334-R04-C05	Hydraulic Clamp, 42"/48" Bucket, Pin-on Attachment.....		\$14,411
	For use with 42"/48" Bucket and Pin-on Attachment Interface.		
M3334-R04-C06	Pro-Link Clamp, 42"/48" Bucket, Hydraulic Pin-Grabber.....		\$17,162
	For use with 42"/48" Bucket and Hydraulic Pin-Grabber.		
M3334-A01-C01	36" Trenching Bucket.....		\$7,448
	Bucket Capacity: 1.02 CU. YD.		
M3334-A01-C02	42" Trenching Bucket.....		\$8,240
	Bucket Capacity: 1.23 CU. YD.		
M3334-A01-C03	48" Trenching Bucket.....		\$8,951
	Bucket Capacity: 1.44 CU. YD.		
M3334-A01-C04	60" Ditching Bucket.....		\$9,632
	Bucket Capacity: 1.92 CU. YD.		

Part Number	Description	Customer Machine IQ Health and Security Subscriptions	SLP in US \$
-------------	-------------	---	--------------

9987580	Customer Machine IQ Health and Security Subscription - 1 Year.....		\$200
	Basics package features + geofence, curfew, email and in-portal notifications, utilization reporting.		
9987581	Customer Machine IQ Health and Security Subscription - 2 Year.....		\$400
	Basics package features + geofence, curfew, email and in-portal notifications, utilization reporting.		
9987582	Customer Machine IQ Health and Security Subscription - 3 Year.....		\$600
	Basics package features + geofence, curfew, email and in-portal notifications, utilization reporting.		
9987583	Customer Machine IQ Health and Security Subscription - 4 Year.....		\$800
	Basics package features + geofence, curfew, email and in-portal notifications, utilization reporting.		
9987584	Customer Machine IQ Health and Security Subscription - 5 Year.....		\$1,000
	Basics package features + geofence, curfew, email and in-portal notifications, utilization reporting.		

E220
Bobcat Large Excavator

Part

Dealer Installed Accessories - Order From Parts

Dealer Installed Kits are coming soon. Reference Bobcat Online Parts
Catalog (OPC) for latest kits and accessories.

E245

Bobcat Large Excavator



Standard Equipment

2yr Machine IQ Basics Subscription with 90-Day Machine IQ Health & Security Free Trial	Hydraulic Joystick Controls
2.9m Long Arm	Motion Alarm
Auto Shut-off	Pin-On Attachment Mounting System
Auxiliary Hydraulics with Selectable Flow	Power Boost
Battery Disconnect	Power Modes: Power+, Power, Standard, Economy
Cab, Enclosed with Auto HVAC - ROPS	Work Modes: One Way, Two Way, Lift, Dig
- Includes: Adjustable Arm Rests, Cup Holder, Heated Air	Self-Diagnostics System
Suspension Seat, Radio (DAB) with Bluetooth Connectivity and USB, Retractable Seat Belt	Smart Key
Camera: Side and Rear View Monitoring	Smart Power Control (SPC)
Control Lock-Out, disabling all machine functionality	Steel Tracks - 800 mm Triple Grouser
Control Pattern Selector Valve (ISO/STD)	Turbocharged Diesel, Tier 4, Non DPF
Display, 8" Touch Screen with Jog Shuttle	Two Way Piping with Pedal and Fingertip Control
- Password protection	USB Charger Port
Emergency Stop Switch	Vandalism Protection (Locking Panels & Fuel Cap)
Engine/Hydraulic Monitor with Shutdown	Warranty: 3 years or 5000 hours, whichever occurs first
Engine Restart Prevention System	Water Separator with Fuel Heater
Fingertip Auxiliary Hydraulic Control	Work Lights LED: Boom (2), Front (1), LH Side (1), RH Side (1) and Rear (1)
Foot Pedal Attachment Control	12 Volt Power Port
Horn (joystick mounted)	24 Volt Power Port

Quick Specs

	<u>E245</u>
Engine Model (Tier 4).....	Bobcat 5.9L
Horsepower.....	189
Main System Hydraulic Flow.....	117.4 GPM
Travel Speed (Maximum).....	3.6 mph
Operating Weight*.....	56,908 lbs.
Cab Height.....	10' 3"
Boom Height.....	9' 9"
Handrail Height.....	11' 2"
Width.....	10' 6"
Length, Transport.....	29' 5"
Dig Depth.....	21' 11"
Reach at Ground Level.....	31' 7"
Dump Height.....	26'
Arm Length.....	9' 6"
Bucket Breakout Force.....	35,464 lbf.
Arm Breakout Force.....	24,703 lbf.
Tail Swing Overhang.....	5.1"

*Operating Weight includes HVAC Cab, steel tracks, counterweight, 36" bucket, 5.7m fixed boom, 2.9m arm, and 165 lbs. (75 kg) operator.

E245

Bobcat Large Excavator

Part Number	Description	Large Excavator	SLP in US \$
-------------	-------------	-----------------	--------------

M3335	E245 Excavator.....		\$273,445
-------	---------------------	--	-----------

Part Number	Description	Individual Factory Options	SLP in US \$
-------------	-------------	----------------------------	--------------

M3335-R03-C02	Hydraulic Activated Pin-Grabber Attachment Quick Coupler.....		\$10,338
	Increases operating weight 830 lbs.		
M3335-R04-C01	Hydraulic Clamp, 36" Bucket, Hydraulic Pin-Grabber.....		\$13,656
	For use with 36" Bucket and Hydraulic Pin-Grabber.		
M3335-R04-C02	Hydraulic Clamp, 36" Bucket, Pin-on Attachment.....		\$13,610
	For use with 36" Bucket and Pin-on Attachment Interface.		
M3335-R04-C03	Pro-Link Clamp, 36" Bucket, Hydraulic Pin-Grabber.....		\$16,764
	For use with 36" Bucket and Hydraulic Pin-Grabber.		
M3335-R04-C04	Hydraulic Clamp, 42"/48" Bucket, Hydraulic Pin-Grabber.....		\$14,505
	For use with 42"/48" Bucket and Hydraulic Pin-Grabber.		
M3335-R04-C05	Hydraulic Clamp, 42"/48" Bucket, Pin-on Attachment.....		\$14,411
	For use with 42"/48" Bucket and Pin-on Attachment Interface.		
M3335-R04-C06	Pro-Link Clamp, 42"/48" Bucket, Hydraulic Pin-Grabber.....		\$17,162
	For use with 42"/48" Bucket and Hydraulic Pin-Grabber.		
M3335-A01-C01	36" Trenching Bucket.....		\$7,448
	Bucket Capacity: 1.02 CU. YD.		
M3335-A01-C02	42" Trenching Bucket.....		\$8,240
	Bucket Capacity: 1.23 CU. YD.		
M3335-A01-C03	48" Trenching Bucket.....		\$8,951
	Bucket Capacity: 1.44 CU. YD.		
M3335-A01-C04	60" Ditching Bucket.....		\$9,632
	Bucket Capacity: 1.92 CU. YD.		

Part Number	Description	Customer Machine IQ Health and Security Subscriptions	SLP in US \$
-------------	-------------	---	--------------

9987580	Customer Machine IQ Health and Security Subscription - 1 Year.....		\$200
	Basics package features + geofence, curfew, email and in-portal notifications, utilization reporting.		
9987581	Customer Machine IQ Health and Security Subscription - 2 Year.....		\$400
	Basics package features + geofence, curfew, email and in-portal notifications, utilization reporting.		
9987582	Customer Machine IQ Health and Security Subscription - 3 Year.....		\$600
	Basics package features + geofence, curfew, email and in-portal notifications, utilization reporting.		
9987583	Customer Machine IQ Health and Security Subscription - 4 Year.....		\$800
	Basics package features + geofence, curfew, email and in-portal notifications, utilization reporting.		
9987584	Customer Machine IQ Health and Security Subscription - 5 Year.....		\$1,000
	Basics package features + geofence, curfew, email and in-portal notifications, utilization reporting.		

E245
Bobcat Large Excavator

Part

Dealer Installed Accessories - Order From Parts

Dealer Installed Kits are coming soon. Reference Bobcat Online Parts
Catalog (OPC) for latest kits and accessories.